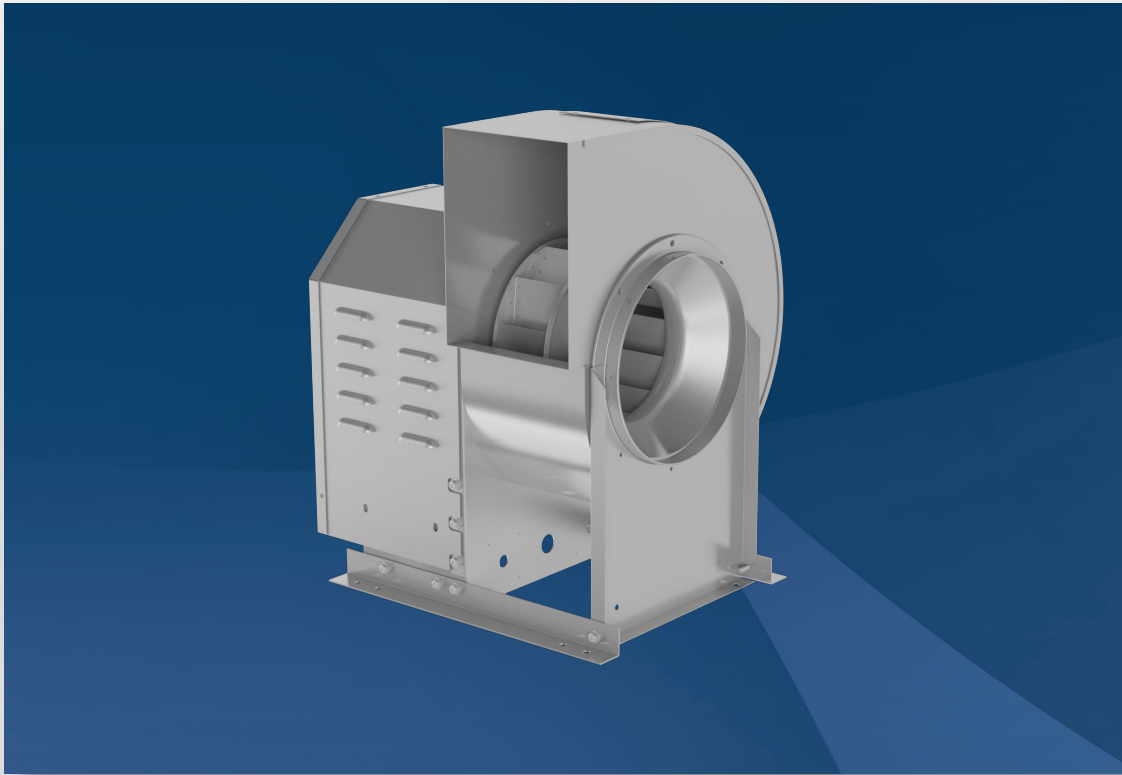


Dynamo

Direct Drive Series

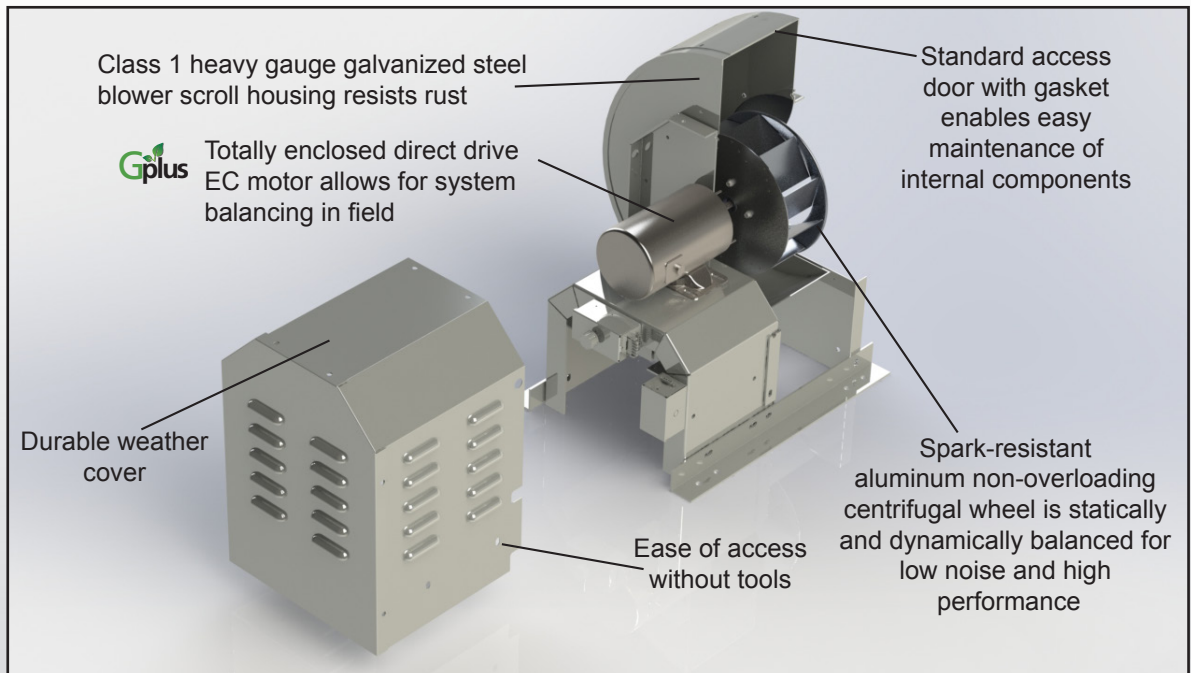


INTRODUCING THE NEWEST MEMBER OF THE DYNAMO FAMILY DIRECT DRIVE DYNAMO

- **High efficiency**
 - **G⁺plus** EC motors provide greater efficiency, flexibility, and controllability
 - Computer validated designed, backward inclined, centrifugal wheel
- **Flexibility**
 - Selection of motors starting from 1/6 HP to 3/4 HP
- **Controllability**
 - Fine-tune motor to exact operating range
 - Ability to connect to building management system
- **Reliability**
 - Totally enclosed EC motor and thermal overload protection are standard
 - Assured quality with rigorous simulation analysis and physical testing



DYNAMO (D)



PennBarry Direct Drive Dynamo centrifugal fans are SWSI, Class I, Arrangement 4 general purpose air moving devices designed for supply or exhaust applications in commercial, institutional and industrial HVAC systems.

Features:

- Totally enclosed direct drive EC motor
- Roof/floor mount utility blower
- Field rotatable to eight discharge positions
- Available with clockwise and counter-clockwise rotations
- Available in sizes 10 to 18
- Capacity: up to 3,000 CFM, 0 – 2" w.g.
- UL Certified and AMCA Certified for sound and air performance

Options:

- Integrate with building management system
- Compatible with Intelligent Pressure Control Module (iQ-IPCM) and Multi-Speed Controller (iQ-MS)



Intelligent Pressure Control Module (iQ-IPCM)



Multi-Speed Controller (iQ-MS)

For more information, contact your local sales representative or visit our website at www.pennbarry.com



PENNBARRY™