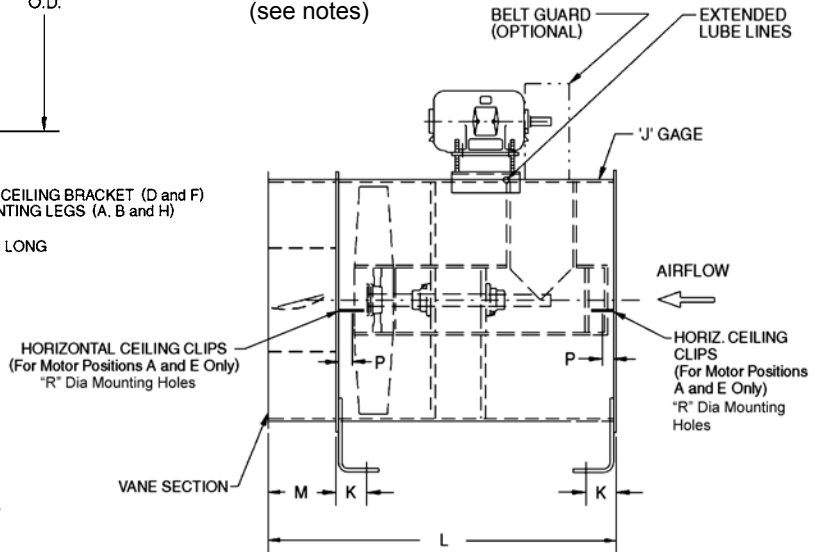
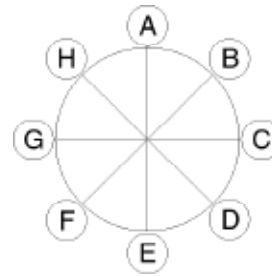
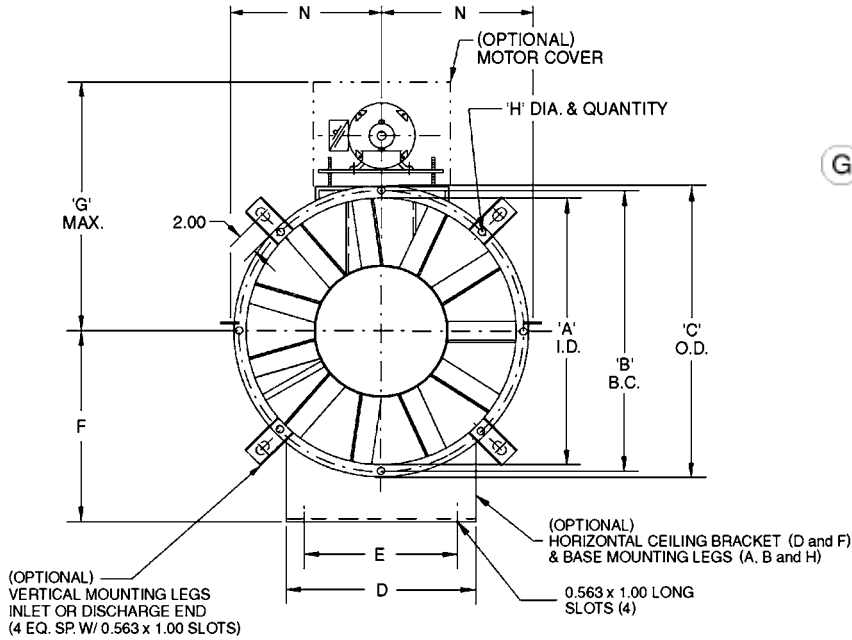


# Vaneaxial Fan Belt Drive



- Notes:**
1. Approximate fan weights are less motor, drive and accessories.
  2. Propeller is eight-bladed cast aluminum.
  3. Base mounting legs are used for motor positions A, B and H.
  4. Horizontal ceiling brackets are used for motor positions D and F.
  5. Horizontal ceiling clips are used for motor positions A and E.
  6. For horizontal ceiling motor positions C and G, see Form ES-VAB-B

## Dimensional Data

Size	A	B	C	D	E	F	G	H	J	K	L - Mtr. Frame Size				M	N	P	R	Unit Weight
											Design 1	Max. Mtr.	Design 2	Max. Mtr.					
012	12.19	13.50	14.38	11.00	9.00	11.00	26.00	.438-8	14	1.68	29.63	184	---	---	5.63	7.19	3.08	.56	120
015	15.19	16.50	17.44	14.00	12.00	13.00	27.50	.438-8	12	1.71	29.63	184	---	---	5.63	8.69	3.10	.56	150
018	18.19	19.81	21.19	17.00	15.00	14.50	30.00	.438-8	12	1.71	33.63	215	---	---	5.63	10.16	3.10	.56	200
021	21.22	22.97	24.22	20.00	18.00	16.00	31.50	.438-8	12	1.71	34.38	215	---	---	6.38	12.17	3.10	.56	250
024	24.25	26.06	27.25	22.00	18.00	18.00	36.25	.438-8	12	1.71	35.38	215	39.38	286	7.38	13.69	3.10	.56	350
030	30.31	32.19	33.31	29.00	25.00	21.50	40.25	.438-8	12	1.71	37.06	215	45.06	286	9.06	16.74	3.10	.56	550
036	36.38	38.18	39.38	35.00	31.00	25.00	44.75	.438-16	10	1.73	47.13	256	53.13	326	11.13	19.75	3.13	.81	850
042	42.44	44.81	46.44	40.00	36.00	29.00	49.25	.563-16	10	1.73	48.69	256	54.69	326	12.69	23.28	3.13	.81	1050
048	48.50	50.88	52.50	46.00	42.00	33.25	54.25	.563-16	10	1.73	56.50	286	62.50	405	14.50	26.31	3.13	.81	1400
054	54.56	57.00	58.56	52.00	48.00	36.25	57.25	.563-16	7	1.78	64.31	286	70.31	405	16.31	29.38	3.18	.81	2100
060	60.63	63.00	64.63	56.00	52.00	39.25	60.25	.563-16	7	1.78	66.31	286	72.31	405	18.31	32.38	3.18	.81	2500



PENNBARRY™

1401 North Plano Road, Richardson, TX 75081  
Ph: 972.234.3202 Fax: 972.497.0468  
www.PennBarry.com

## Submittal Sheet Vaneaxial Fan - Model VXB Belt Drive

This drawing illustrates our understanding of order requirements. When approved, it represents details for fabrication, as such, PennBarry will not be responsible for revisions in the field or other changes after release for fabrication. Published and protected by PennBarry, Richardson, TX. All rights reserved. May not be reproduced partially or in full without permission from the publisher. No rights conveyed to manufacture partially or in full, use or sell either the method of construction represented or any invention in any way related thereto.

**Form ES-VXB-A**  
Revised March 2005