

AWX

Axial Warehouse Exhaust Fan



PENN BARRY™ INTRODUCES NEW AND IMPROVED LINE OF TUBE AXIAL PROPELLER FANS

The AWX is designed using the latest in Computational Fluid Dynamics and Finite Elemental Analysis to bring an industry leading Inline Axial Fan. The durable welded, CNC precision rolled concentric housings with the adjustable pitch aerodynamic cast aluminum propellers are engineered to provide maximum performance, efficiency, and reliability.

AWX Fans are designed for versatility in medium pressure inline applications used in commercial, institutional, or industrial applications. AWX is suitable for warehouse ventilation, space pressurization, crypto-currency data mining facilities, and general supply / exhaust ventilation.

BENEFITS

- True airfoil blade design maximizing fan efficiency and reducing operating costs
- Propeller designed to provide better overall sound quality
- Highly efficient adjustable pitch propeller in 6 and 9 blade configurations to meet a wide range of performance demands
- AMCA Air, Sound & FEI certification
- cUL705 certification
- Static pressure up to 2.75" wg. (680 pa)
- Flow capacity up to 88,700 CFM (41,800 L/s)

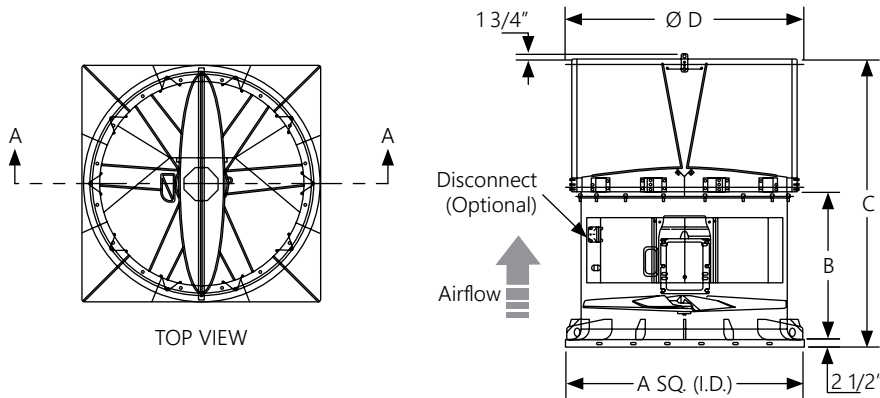
FEATURES

- Adjustable cast aluminum propeller, 6 or 9 bladed
- Indoor/Outdoor application
- Base or ceiling mounting for vertical or horizontal orientation
- Rooftop mounting
- Mild steel and coated housing
- Punched flanges
- Access door
- Single point wiring for easy field connection
- Permanent magnet and premium efficient motor solutions

Accessories

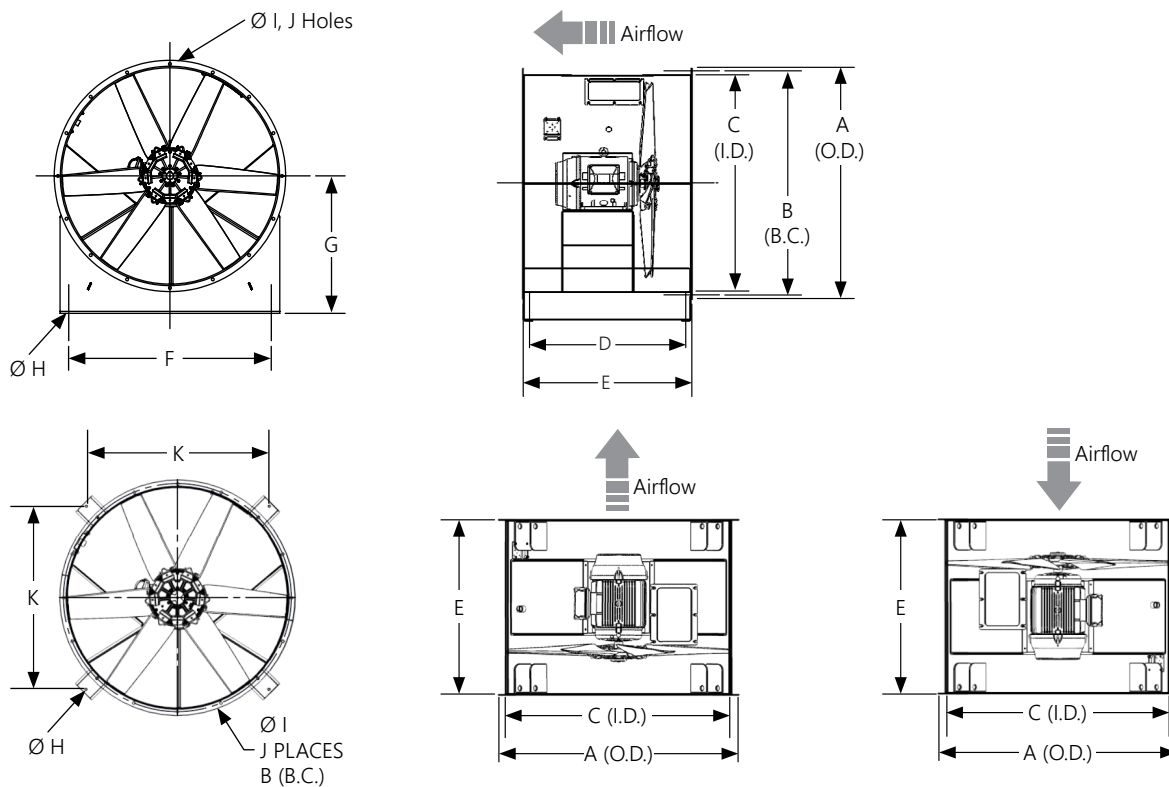
- Discharge windband with butterfly damper
- Curb cap with integral lifting lugs
- Roof curbs
- Inlet bell
- Service switches
- Variable Frequency Drives

Rooftop Mounted Fan



	A	B	C	D	Min MTR Frame	Max MTR Frame	Unit weight (less motor)	Discharge windband weight	Total Unit Weight (less motor)
AWX-160	73	48 1/8	88 3/8	73 1/2	213T	326T	1180	300	1480

Horizontal and Vertical Mounted Fan



	A	B	C	D	E	F	G	H	I	J	K	Min MTR Frame	Max MTR Frame	Unit weight (less motor)
AWX-160	67 3/8	65 1/4	63	45 1/2	49 1/8	59	40	13/16	13/16	16	49 1/8	213T	326T	1146

"All dimensions shown are inches and weights are approximate and are in lbs. Not to be used for construction."