

# SQX

Square Inline Fans

## TECHNICAL SPECIFICATIONS



PENNBARRY™

BULLETIN SQX21

# TABLE OF CONTENTS

INTRODUCTION	4	270-08 DIRECT DRIVE	17
CERTIFICATIONS & LISTINGS	4	300-08 DIRECT DRIVE	17
BELT DRIVE	5	330-08 DIRECT DRIVE	18
DIRECT DRIVE	5	365-08 DIRECT DRIVE	18
182-365 DIRECT DRIVE	6	100-05 DIRECT DRIVE	19
060 DIRECT DRIVE	7	122-05 DIRECT DRIVE	19
070 DIRECT DRIVE	7	135-05 DIRECT DRIVE	19
080 DIRECT DRIVE	7	150-05 DIRECT DRIVE	20
100 DIRECT DRIVE	7	165-05 DIRECT DRIVE	20
122 DIRECT DRIVE	8	182-05 DIRECT DRIVE	21
135 DIRECT DRIVE	8	200-05 DIRECT DRIVE	21
150 DIRECT DRIVE	9	222-05 DIRECT DRIVE	22
165 DIRECT DRIVE	9	245-05 DIRECT DRIVE	22
182 DIRECT DRIVE	10	270-05 DIRECT DRIVE	22
200 DIRECT DRIVE	10	300-05 DIRECT DRIVE	23
222 DIRECT DRIVE	11	330-05 DIRECT DRIVE	23
245 DIRECT DRIVE	11	365-05 DIRECT DRIVE	23
270 DIRECT DRIVE	12	135 BELT DRIVE	24
300 DIRECT DRIVE	12	150 BELT DRIVE	24
330 DIRECT DRIVE	13	165 BELT DRIVE	25
365 DIRECT DRIVE	13	182 BELT DRIVE	25
100-08 DIRECT DRIVE	14	200 BELT DRIVE	26
122-08 DIRECT DRIVE	14	222 BELT DRIVE	26
135-08 DIRECT DRIVE	14	245 BELT DRIVE	27
150-08 DIRECT DRIVE	15	270 BELT DRIVE	27
165-08 DIRECT DRIVE	15	300 BELT DRIVE	28
182-08 DIRECT DRIVE	16	330 BELT DRIVE	28
200-08 DIRECT DRIVE	16	365 BELT DRIVE	29
222-08 DIRECT DRIVE	16	402 BELT DRIVE	29
245-08 DIRECT DRIVE	17	135-08 BELT DRIVE	30

# TABLE OF CONTENTS

150-08 BELT DRIVE	30
165-08 BELT DRIVE	30
182-08 BELT DRIVE	31
200-08 BELT DRIVE	31
222-08 BELT DRIVE	31
245-08 BELT DRIVE	32
270-08 BELT DRIVE	32
300-08 BELT DRIVE	32
330-08 BELT DRIVE	33
365-08 BELT DRIVE	33
402-08 BELT DRIVE	33
135-05 BELT DRIVE	34
150-05 BELT DRIVE	34
165-05 BELT DRIVE	34
182-05 BELT DRIVE	35
200-05 BELT DRIVE	35
222-05 BELT DRIVE	35
245-05 BELT DRIVE	36
270-05 BELT DRIVE	36
300-05 BELT DRIVE	36
330-05 BELT DRIVE	37
365-05 BELT DRIVE	37
402-05 BELT DRIVE	37

# INTRODUCTION

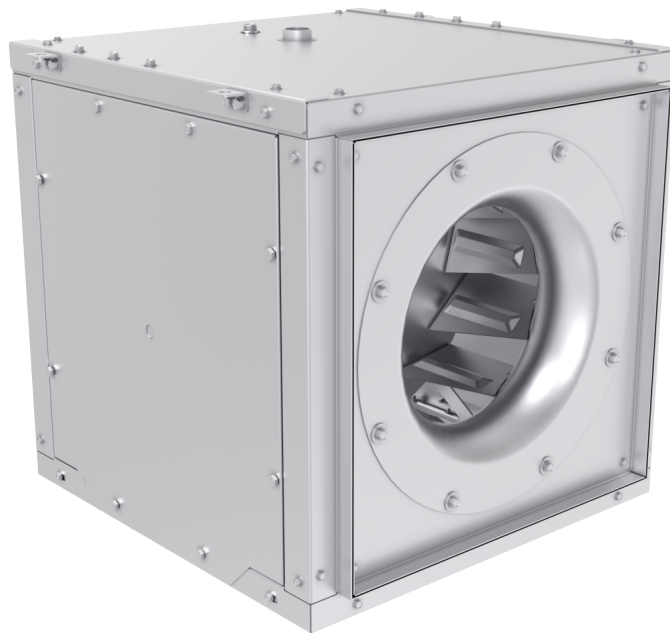
## SQX Series Square Centrifugal Fans

The SQX square centrifugal fan line is ideal to use in square ducts as clean air boosters in both exhaust and supply systems where the installation of conventional blowers is impractical.

The SQX fan can be either ceiling hung or floor mounted, making it suitable for both horizontal and vertical applications.

All centrifugal wheels in the SQX product line are statically and dynamically balanced to AMCA Standard 204-96, Balance Quality and Vibration Levels for Fans, to ensure quiet and reliable operation.

All fans are fully assembled and test run prior to shipping.



# CERTIFICATIONS & LISTINGS



## SQX Fans

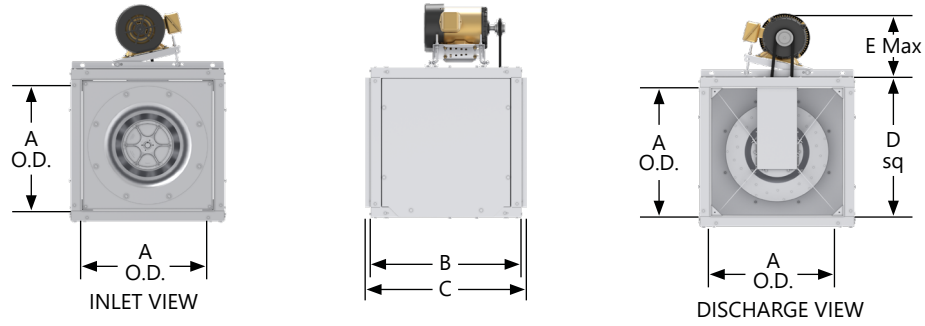
PennBarry certifies that the SQX models shown herein are licensed to bear the AMCA seal. The ratings shown are based on tests and procedures performed in accordance with AMCA publication 211 and AMCA publication 311 and comply with the requirements of the AMCA Certified Ratings Program.



## UL and cULus Certification

SQX fans carry the UL label, UL705, (ZACT/ZACT7), file #E28413

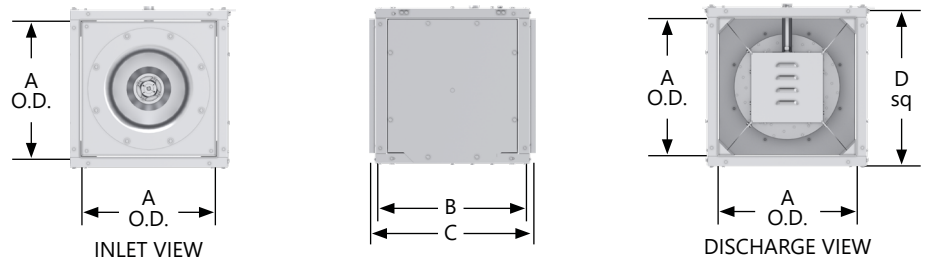
# BELT DRIVE



Size	A	B	C	D	E	Max MTR Frame	SHIP WT.
135	18	20-5/8	22-5/8	20-5/8	9-3/4	145T	100
150	20	23	25	23	11	145T	120
165	22	25-5/16	27-5/16	25-5/16	11-1/4	182T	140
182	24	28	30	27-7/8	11-1/4	182T	160
200	26	30-3/8	33-3/8	30-9/16	11-1/4	182T	195
222	30	34-1/4	37-1/4	33-3/4	11-1/4	184T	235
245	33	34	38	36	15	184T	270
270	36	37-1/2	41-1/2	39-11/16	15	213	355
300	40	38	42	44	15	213	395
330	44	41-3/4	45-3/4	48-1/2	15	215T	460
365	48-1/2	46-1/4	50-1/4	53-1/2	15	215T	562
402	53-1/2	51	55	59	15	215T	657

All dimensions are in inches

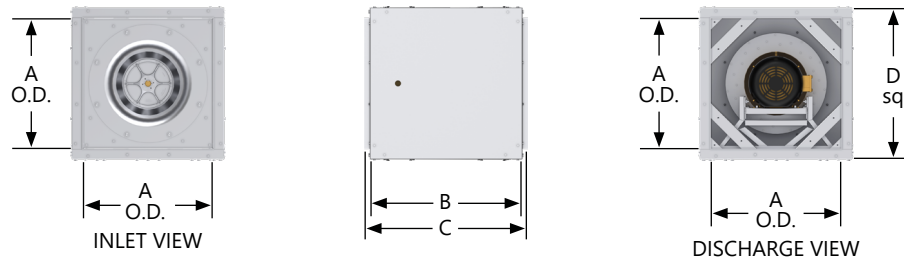
# DIRECT DRIVE



Size	A	B	C	D	Max MTR Frame	Less Motor/Drive Weight (lbs)
060	13-1/8	16-3/8	18-3/8	15-1/16	56	48
070	13-1/8	16-3/8	18-3/8	15-1/16	56	48
080	13-1/8	16-3/8	18-3/8	15-1/16	56	48
100	13-1/8	16-3/8	18-3/8	15-1/16	56	45
122	16	20	22	18-7/16	56	75
135	18	20-5/8	22-5/8	20-5/8	56	85
150	20	23	25	23	145T	110
165	22	25-5/16	27-5/16	25-5/16	145T	140

All dimensions are in inches

# 182-365 DIRECT DRIVE



Size	A	B	C	D	Max MTR Frame
182	24	28	30	27-7/8	184T
200	26	30-11/16	33-11/16	30-9/16	184T
222	30	34-3/16	37-3/16	33-3/4	215T
245	33	37-9/16	41-9/16	36	215T
270	36	41-7/16	45-7/16	39-11/16	215T
300	40	46-1/16	50-1/16	44	254T
330	44	50-5/8	54-5/8	48-1/2	256T
365	48-1/2	56	60	53-1/2	284T

All dimensions are in inches

# 060 DIRECT DRIVE

Indicates G-Plus Motor Speed and HP

Motor HP	Fan RPM	Max BHP	Max Inlet/Outlet Sones	Tip Speed	CFM / Static Pressure (Inches WG)											
					0.000	0.125	0.250	0.500	0.750	1.000	1.250	1.500	1.750	2.000	2.250	2.500
Min Motor Frame 56					Max Motor Frame 56					Max RPM 1725						
1/6	900	0.125	3.2 / 4.1	2356	128	75										
1/6	1200	0.040	5.4 / 6.6	3142	170	131	89									
1/6	1725	0.125	10 / 13.2	4516	245	217	190	133								

Performance certified is for installation type B: free inlet, ducted outlet. Power rating does not include transmission losses. Performance ratings do not include appurtenances. The sound ratings shown are loudness values in fan sones at 1.5 m (5 ft) in a hemispherical free field calculated per AMCA International Standard 301. Values are for installation type B: free inlet hemispherical sone levels.

# 070 DIRECT DRIVE

Indicates G-Plus Motor Speed and HP

Motor HP	Fan RPM	Max BHP	Max Inlet/Outlet Sones	Tip Speed	CFM / Static Pressure (Inches WG)											
					0.000	0.125	0.250	0.500	0.750	1.000	1.250	1.500	1.750	2.000	2.250	2.500
Min Motor Frame 56					Max Motor Frame 56					Max RPM 1725						
1/6	900	0.020	5.2 / 3.9	2356	234	159										
1/6	1200	0.040	7.2 / 6.1	3142	312	259	197									
1/6	1725	0.125	11.6 / 12	4516	449	412	375	290	145							

Performance certified is for installation type B: free inlet, ducted outlet. Power rating does not include transmission losses. Performance ratings do not include appurtenances. The sound ratings shown are loudness values in fan sones at 1.5 m (5 ft) in a hemispherical free field calculated per AMCA International Standard 301. Values are for installation type B: free inlet hemispherical sone levels.

# 080 DIRECT DRIVE

Indicates G-Plus Motor Speed and HP

Motor HP	Fan RPM	Max BHP	Max Inlet/Outlet Sones	Tip Speed	CFM / Static Pressure (Inches WG)											
					0.000	0.125	0.250	0.500	0.750	1.000	1.250	1.500	1.750	2.000	2.250	2.500
Min Motor Frame 56					Max Motor Frame 56					Max RPM 1725						
1/6	900	0.020	3.9 / 4	2356	283	193										
1/6	1200	0.050	7.6 / 6.5	3142	378	312	239									
1/6	1725	0.167	11.8 / 13.1	4516	543	499	452	351								

Performance certified is for installation type B: free inlet, ducted outlet. Power rating does not include transmission losses. Performance ratings do not include appurtenances. The sound ratings shown are loudness values in fan sones at 1.5 m (5 ft) in a hemispherical free field calculated per AMCA International Standard 301. Values are for installation type B: free inlet hemispherical sone levels.

# 100 DIRECT DRIVE

Indicates G-Plus Motor Speed and HP

Motor HP	Fan RPM	Max BHP	Max Inlet/Outlet Sones	Tip Speed	CFM / Static Pressure (Inches WG)											
					0.000	0.125	0.250	0.500	0.750	1.000	1.250	1.500	1.750	2.000	2.250	2.500
Min Motor Frame 56					Max Motor Frame 56					Max RPM 1725						
1/6	900	0.027	5.1 / 4.2	2356	436	330										
1/6	1200	0.063	6.9 / 6.7	3142	581	504	418									
1/3	1725	0.188	12.3 / 12.7	4516	836	782	729	610	391							

Performance certified is for installation type B: free inlet, ducted outlet. Power rating does not include transmission losses. Performance ratings do not include appurtenances. The sound ratings shown are loudness values in fan sones at 1.5 m (5 ft) in a hemispherical free field calculated per AMCA International Standard 301. Values are for installation type B: free inlet hemispherical sone levels.

# 122 DIRECT DRIVE

Indicates G-Plus Motor Speed and HP

Motor HP	Fan RPM	Max BHP	Max Inlet/Outlet Sones	Tip Speed	CFM / Static Pressure (Inches WG)												
					0.000	0.125	0.250	0.500	0.750	1.000	1.250	1.500	1.750	2.000	2.250	2.500	2.750
Min Motor Frame 56					Max Motor Frame 56					Max RPM 1725							
1/6	900	0.074	6.2 / 6.3	2886	802	675	513										
1/3	1200	0.175	10.1 / 9.8	3848	1069	974	878	596									
1/2	1725	0.5	18 / 18.6	5532	1536	1471	1405	1272	1121	896							

Performance certified is for installation type B: free inlet, ducted outlet. Power rating does not include transmission losses. Performance ratings do not include appurtenances. The sound ratings shown are loudness values in fan sones at 1.5 m (5 ft) in a hemispherical free field calculated per AMCA International Standard 301. Values are for installation type B: free inlet hemispherical sone levels.

# 135 DIRECT DRIVE

Indicates G-Plus Motor Speed and HP

Motor HP	Fan RPM	Max BHP	Max Inlet/Outlet Sones	Tip Speed	CFM / Static Pressure (Inches WG)												
					0.125	0.250	0.500	0.750	1.000	1.250	1.500	1.750	2.000	2.250	2.500	2.750	3.000
Min Motor Frame 56					Max Motor Frame 145T					Max RPM 2332							
1/6	600	0.025	5.8 / 3.3	2121	479												
	900	0.085	10.4 / 7	3181	923	764											
1/4	1129	0.167	13.4 / 9.5	3990	1229	1105	823										
	1194	0.2	14.7 / 10.5	4220	1313	1196	948										
1/3	1200	0.203	16 / 11	4241	1321	1205	958										
1/4	1286	0.248	16.6 / 11.9	4545	1431	1324	1102	736									
1/2	1504	0.398	21 / 15.6	5316	1707	1616	1430	1232	917								
	1621	0.498	24 / 17.9	5729	1854	1769	1597	1421	1215								
3/4	1722	0.598	26 / 19.9	6086	1980	1900	1739	1574	1397	1156							
	1725	0.601	26 / 20	6097	1983	1904	1743	1578	1402	1166							
1	1855	0.749	29 / 22	6556	2144	2071	1921	1770	1615	1442	1165						
	1971	0.896	31 / 25	6966	2287	2218	2078	1936	1791	1639	1458	1149					
1 1/2	2042	0.999	33 / 26	7217	2375	2308	2173	2036	1897	1756	1596	1383					
	2170	1.2	36 / 29	7669	2532	2469	2342	2214	2084	1952	1814	1661	1436				
	2332	1.49	40 / 32	8242	2730	2671	2553	2434	2314	2194	2070	1940	1799	1609	1287		

Performance certified is for installation type B: free inlet, ducted outlet. Power rating does not include transmission losses. Performance ratings do not include appurtenances. The sound ratings shown are loudness values in fan sones at 1.5 m (5 ft) in a hemispherical free field calculated per AMCA International Standard 301. Values are for installation type B: free inlet hemispherical sone levels.



# 150 DIRECT DRIVE

Indicates G-Plus Motor Speed and HP

Motor HP	Fan RPM	Max BHP	Max Inlet/Outlet Sones	Tip Speed	CFM / Static Pressure (Inches WG)												
					0.125	0.250	0.500	0.750	1.000	1.250	1.500	1.750	2.000	2.250	2.500	2.750	3.000
Min Motor Frame 56					Max Motor Frame 145T					Max RPM 2099							
1/6	600	0.042	7.1 / 4.1	2356	725												
1/3	900	0.142	12.9 / 8.5	3534	1307	1133											
1/4	943	0.163	12.3 / 9	3703	1386	1220	732										
	1002	0.197	13.7 / 9.6	3935	1492	1337	974										
	1079	0.249	15.4 / 10.8	4237	1629	1486	1180										
1/2	1200	0.34	19.4 / 13.4	4712	1842	1713	1451	1104									
	1262	0.398	19.8 / 14.2	4956	1950	1828	1579	1295									
	1360	0.499	22 / 16	5341	2119	2006	1778	1535	1161								
3/4	1445	0.596	24 / 17.9	5675	2265	2159	1945	1725	1459								
	1556	0.747	27 / 20	6110	2455	2357	2158	1956	1739	1455							
1	1654	0.9	29 / 23	6495	2621	2529	2343	2154	1960	1743	1369						
	1713	0.998	31 / 24	6727	2721	2632	2453	2271	2085	1882	1620						
1 1/2	1820	1.199	34 / 27	7147	2902	2818	2650	2479	2306	2129	1929	1628					
	1961	1.5	38 / 30	7701	3139	3062	2905	2748	2589	2426	2258	2072	1809				
2	2099	1.839	42 / 33	8243	3370	3298	3153	3006	2858	2708	2556	2395	2221	1988	1590		

Performance certified is for installation type B: free inlet, ducted outlet. Power rating does not include transmission losses. Performance ratings do not include appurtenances. The sound ratings shown are loudness values in fan sones at 1.5 m (5 ft) in a hemispherical free field calculated per AMCA International Standard 301. Values are for installation type B: free inlet hemispherical sone levels.

# 165 DIRECT DRIVE

Indicates G-Plus Motor Speed and HP

Motor HP	Fan RPM	Max BHP	Max Inlet/Outlet Sones	Tip Speed	CFM / Static Pressure (Inches WG)												
					0.125	0.250	0.500	0.750	1.000	1.250	1.500	1.750	2.000	2.250	2.500	2.750	3.000
Min Motor Frame 56					Max Motor Frame 184T					Max RPM 2000							
1/3	600	0.068	9 / 5.1	2592	1027	586											
1/2	900	0.229	15.4 / 10.2	3888	1779	1589	1136										
1/4	809	0.167	12 / 8.2	3495	1560	1345											
	855	0.195	12.7 / 9.1	3693	1671	1470	871										
	921	0.248	14.5 / 10.4	3978	1829	1643	1218										
1/2	1077	0.397	18.6 / 13	4652	2196	2039	1716	1253									
	1160	0.499	21 / 14.7	5011	2388	2243	1946	1615									
3/4	1200	0.553	23 / 16	5184	2480	2340	2054	1745	1171								
	1233	0.599	23 / 16.4	5326	2556	2420	2142	1847	1384								
	1328	0.747	26 / 18.5	5737	2773	2647	2390	2127	1821	1204							
1	1411	0.898	28 / 20	6095	2962	2843	2603	2357	2094	1740							
	1461	0.995	29 / 22	6311	3075	2961	2729	2493	2247	1945	1377						
1 1/2	1553	1.198	32 / 24	6708	3283	3175	2957	2736	2511	2264	1944	1239					
	1673	1.499	36 / 27	7227	3552	3453	3251	3047	2840	2629	2392	2079	1454				
2	1778	1.801	40 / 30	7680	3788	3694	3504	3313	3120	2923	2718	2491	2161	1578			
	1841	1.995	42 / 32	7953	3928	3838	3655	3471	3284	3096	2904	2690	2432	2025			
3	1957	2.398	46 / 36	8454	4187	4102	3930	3757	3583	3407	3227	3047	2841	2597			
	2000	2.556	48 / 37	8639	4283	4199	4032	3862	3692	3520	3345	3169	2975	2763	2487	2009	

Performance certified is for installation type B: free inlet, ducted outlet. Power rating does not include transmission losses. Performance ratings do not include appurtenances. The sound ratings shown are loudness values in fan sones at 1.5 m (5 ft) in a hemispherical free field calculated per AMCA International Standard 301. Values are for installation type B: free inlet hemispherical sone levels.

# 182 DIRECT DRIVE

Indicates G-Plus Motor Speed and HP

Motor HP	Fan RPM	Max BHP	Max Inlet/Outlet Sones	Tip Speed	CFM / Static Pressure (Inches WG)												
					0.125	0.250	0.500	0.750	1.000	1.250	1.500	1.750	2.000	2.250	2.500	2.750	3.000
Min Motor Frame 56					Max Motor Frame 184T					Max RPM 1759							
1/2	600	0.131	7.9 / 8.2	2867	1729	1436											
1/4	691	0.195	9.4 / 9.7	3301	2065	1840											
	744	0.238	10.7 / 11	3555	2259	2047	1253										
1/2	870	0.397	13.8 / 14.3	4157	2712	2526	2131										
3/4	900	0.438	15 / 15.7	4300	2819	2639	2269										
1/2	942	0.498	15.5 / 16.2	4501	2967	2794	2459	1854									
3/4	996	0.597	15.8 / 16.5	4759	3157	2993	2676	2247									
	1073	0.745	18 / 18.8	5127	3426	3272	2976	2644	1996								
1	1141	0.896	20 / 21	5452	3662	3517	3235	2955	2542								
	1181	0.998	21 / 22	5643	3801	3660	3386	3124	2769	2031							
1 1/2	1255	1.19	24 / 25	5996	4056	3923	3665	3415	3127	2723							
	1352	1.496	27 / 28	6460	4389	4266	4025	3789	3560	3259	2807						
2	1437	1.796	29 / 31	6866	4680	4564	4336	4112	3896	3651	3339	2814					
	1488	1.992	30 / 33	7109	4855	4743	4522	4305	4094	3882	3602	3240	2506				
3	1582	2.401	33 / 36	7559	5175	5070	4860	4656	4455	4259	4035	3772	3413	2699			
	1704	2.996	37 / 41	8141	5590	5492	5296	5106	4917	4733	4552	4337	4093	3770	3235		
5	1759	3.294	40 / 43	8404	5776	5682	5492	5307	5124	4944	4768	4586	4349	4084	3748	3092	

Performance certified is for installation type B: free inlet, ducted outlet. Power rating does not include transmission losses. Performance ratings do not include appurtenances. The sound ratings shown are loudness values in fan sones at 1.5 m (5 ft) in a hemispherical free field calculated per AMCA International Standard 301. Values are for installation type B: free inlet hemispherical sone levels.

# 200 DIRECT DRIVE

Indicates G-Plus Motor Speed and HP

Motor HP	Fan RPM	Max BHP	Max Inlet/Outlet Sones	Tip Speed	CFM / Static Pressure (Inches WG)												
					0.125	0.250	0.500	0.750	1.000	1.250	1.500	1.750	2.000	2.250	2.500	2.750	3.000
Min Motor Frame 56					Max Motor Frame 184T					Max RPM 1480							
1/4	593	0.197	8.6 / 9	3105	2297	2000											
	600*	0.204	9.6 / 9.8	3142	2335	2042											
	639	0.243	10 / 10.3	3346	2521	2253											
1/2	747	0.398	13 / 13.4	3911	3037	2801	2240										
	805	0.496	14.7 / 15.2	4215	3309	3089	2627										
3/4	855	0.589	16.1 / 16.7	4477	3542	3334	2926	2171									
	921	0.747	17.9 / 18.6	4822	3848	3653	3277	2789									
1	979	0.894	19.7 / 20	5126	4114	3930	3573	3175	2396								
	1014	0.988	19.3 / 20	5309	4274	4096	3749	3386	2833								
1 1/2	1078	1.199	22 / 23	5644	4566	4397	4069	3753	3329	2444							
	1161	1.492	24 / 26	6079	4943	4786	4479	4182	3851	3391	2290						
2	1234	1.797	27 / 29	6461	5273	5125	4835	4553	4277	3915	3374						
	1278	1.991	29 / 30	6692	5471	5328	5048	4773	4507	4184	3761	2928					
3	1358	2.394	32 / 34	7110	5831	5697	5431	5171	4918	4663	4327	3892	3013				
	1463	2.994	35 / 38	7660	6302	6177	5929	5687	5448	5216	4962	4651	4247	3516			
5	1480	3.094	37 / 41	7749	6378	6255	6009	5770	5532	5303	5063	4755	4375	3748			

Performance certified is for installation type B: free inlet, ducted outlet. Power rating does not include transmission losses. Performance ratings do not include appurtenances. The sound ratings shown are loudness values in fan sones at 1.5 m (5 ft) in a hemispherical free field calculated per AMCA International Standard 301. Values are for installation type B: free inlet hemispherical sone levels.

\*EC motor is 3/4 HP.

# 222 DIRECT DRIVE

Motor HP	Fan RPM	Max BHP	Max Inlet/Outlet Sones	Tip Speed	CFM / Static Pressure (Inches WG)												
					0.125	0.250	0.500	0.750	1.000	1.250	1.500	1.750	2.000	2.250	2.500	2.750	3.000
Min Motor Frame 56					Max Motor Frame 184T					Max RPM 1458							
1/4	537	0.249	9.1 / 9.4	3128	2870	2508											
1/2	633	0.4	12.3 / 12.7	3687	3508	3202	2287										
	674	0.499	13.7 / 14.1	3926	3775	3484	2799										
3/4	717	0.599	15.1 / 15.6	4177	4054	3778	3195										
	776	0.75	17 / 17.6	4520	4432	4176	3682	2813									
1	820	0.897	18.4 / 19.1	4777	4712	4469	3999	3371									
	849	1	19.4 / 20	4945	4896	4660	4205	3667									
1 1/2	902	1.187	21 / 22	5254	5231	5007	4575	4113	3348								
	972	1.499	24 / 25	5662	5670	5461	5056	4667	4150	3084							
2	1033	1.789	24 / 25	6017	6052	5855	5472	5102	4678	4086							
	1070	1.996	26 / 27	6233	6282	6092	5722	5362	4984	4469	3481						
3	1137	2.386	29 / 30	6623	6699	6520	6170	5826	5494	5080	4532	3364					
	1225	2.992	33 / 35	7136	7244	7078	6750	6429	6117	5807	5392	4863	3813				
5	1301	3.595	37 / 39	7578	7713	7557	7246	6944	6646	6355	6026	5636	5109	4078			
	1348	3.989	39 / 41	7852	8003	7852	7551	7259	6968	6688	6408	6034	5597	4938	3682		
	1458	5	43 / 47	8493	8680	8540	8262	7989	7719	7454	7195	6935	6592	6225	5748	4891	

Performance certified is for installation type B: free inlet, ducted outlet. Power rating does not include transmission losses. Performance ratings do not include appurtenances. The sound ratings shown are loudness values in fan sones at 1.5 m (5 ft) in a hemispherical free field calculated per AMCA International Standard 301. Values are for installation type B: free inlet hemispherical sone levels.

# 245 DIRECT DRIVE

Motor HP	Fan RPM	Max BHP	Max Inlet/Outlet Sones	Tip Speed	CFM / Static Pressure (Inches WG)												
					0.125	0.250	0.500	0.750	1.000	1.250	1.500	1.750	2.000	2.250	2.500	2.750	3.000
Min Motor Frame 56					Max Motor Frame 213T					Max RPM 1388							
1/2	565	0.499	7.2 / 10.6	3624	4765	4293	2773										
3/4	602	0.6	8.2 / 12.1	3861	5136	4694	3557										
	645	0.75	9.7 / 13.7	4137	5564	5152	4221										
1	685	0.9	10.6 / 15.2	4394	5959	5570	4743	3221									
	709	0.998	11.4 / 16.1	4548	6194	5819	5044	3803									
1 1/2	754	1.195	12.5 / 17.8	4836	6633	6281	5574	4624									
	812	1.499	14.3 / 20	5208	7196	6869	6213	5467	4245								
2	863	1.799	15.8 / 22	5535	7687	7380	6763	6111	5222								
	894	2	16.8 / 23	5734	7985	7689	7093	6495	5696	4402							
3	950	2.4	18.6 / 26	6093	8522	8242	7682	7121	6471	5589							
	1023	2.996	21 / 30	6562	9218	8958	8439	7918	7385	6721	5779						
5	1126	3.996	25 / 35	7222	10196	9960	9488	9016	8542	8037	7442	6651	5446				
	1213	4.995	28 / 40	7780	11019	10800	10362	9924	9485	9045	8549	7990	7270	6244			
7 1/2	1289	5.994	31 / 45	8268	11736	11530	11118	10705	10293	9879	9465	8969	8426	7748	6835	5503	
	1388	7.485	35 / 52	8903	12667	12476	12094	11711	11328	10944	10560	10176	9713	9232	8617	7880	

Performance certified is for installation type B: free inlet, ducted outlet. Power rating does not include transmission losses. Performance ratings do not include appurtenances. The sound ratings shown are loudness values in fan sones at 1.5 m (5 ft) in a hemispherical free field calculated per AMCA International Standard 301. Values are for installation type B: free inlet hemispherical sone levels.

# 270 DIRECT DRIVE

Motor HP	Fan RPM	Max BHP	Max Inlet/Outlet Sones	Tip Speed	CFM / Static Pressure (Inches WG)												
					0.125	0.250	0.500	0.750	1.000	1.250	1.500	1.750	2.000	2.250	2.500	2.750	3.000
Min Motor Frame 56					Max Motor Frame 213T					Max RPM 1181							
1/2	444	0.398	6.3 / 8.6	3138	4847	4149											
	479	0.499	7.4 / 9.9	3386	5329	4715											
3/4	511	0.6	8.4 / 10.9	3612	5764	5189	3312										
	551	0.75	9.8 / 12.6	3895	6301	5769	4428										
1	583	0.899	11.1 / 13.9	4121	6727	6224	5080										
	603	0.998	11.9 / 14.8	4262	6992	6506	5445										
1 1/2	641	1.198	13.5 / 16.5	4531	7492	7035	6087	4556									
	692	1.499	15 / 18.7	4891	8158	7735	6886	5776									
2	734	1.799	16.2 / 20	5188	8703	8304	7504	6591	5063								
	760	1.997	17 / 22	5372	9039	8654	7882	7034	5784								
3	808	2.4	18.4 / 24	5711	9657	9295	8569	7835	6852	5237							
	870	2.996	21 / 27	6150	10451	10115	9441	8766	7994	6976	5186						
5	958	4	25 / 31	6772	11573	11268	10657	10044	9431	8687	7745	6263					
	1031	4.986	30 / 37	7288	12500	12216	11649	11080	10510	9915	9200	8288	6925				
7 1/2	1097	6.006	33 / 41	7754	13335	13069	12536	12001	11466	10931	10321	9631	8752	7461			
	1181	7.495	37 / 47	8348	14396	14148	13653	13157	12660	12163	11665	11083	10459	9645	8602	7144	

Performance certified is for installation type B: free inlet, ducted outlet. Power rating does not include transmission losses. Performance ratings do not include appurtenances. The sound ratings shown are loudness values in fan sones at 1.5 m (5 ft) in a hemispherical free field calculated per AMCA International Standard 301. Values are for installation type B: free inlet hemispherical sone levels.

# 300 DIRECT DRIVE

Motor HP	Fan RPM	Max BHP	Max Inlet/Outlet Sones	Tip Speed	CFM / Static Pressure (Inches WG)												
					0.125	0.250	0.500	0.750	1.000	1.250	1.500	1.750	2.000	2.250	2.500	2.750	3.000
Min Motor Frame 56					Max Motor Frame 215T					Max RPM 1013							
1/2	401	0.499	7.2 / 8.6	3149	5811	5072											
3/4	427	0.599	8.2 / 9.7	3354	6291	5619											
	466	0.771	9.7 / 11.4	3660	7001	6368	4331										
1	488	0.897	10.6 / 12.5	3833	7397	6783	5218										
	505	0.998	11.4 / 12.9	3966	7701	7100	5681										
1 1/2	536	1.196	12.5 / 14.3	4210	8252	7677	6466										
	579	1.499	14.3 / 16.3	4547	9010	8470	7438	5664									
2	614	1.792	15.8 / 18.1	4822	9621	9106	8144	6836									
	636	2	16.8 / 19.2	4995	10004	9503	8567	7427									
3	676	2.394	18.6 / 21	5309	10697	10219	9327	8366	6844								
	728	2.997	21 / 24	5718	11592	11140	10296	9507	8405	6405							
5	802	3.999	25 / 28	6299	12859	12446	11669	10933	10144	9078	7244						
	863	4.986	28 / 32	6778	13897	13514	12782	12080	11414	10579	9523	7660					
7 1/2	917	5.996	31 / 35	7202	14813	14453	13755	13084	12451	11795	10936	9872	7907				
	988	7.5	35 / 40	7760	16014	15679	15020	14398	13790	13208	12552	11755	10765	9161			
10	1013	8.069	39 / 42	7956	16436	16109	15462	14855	14255	13688	13109	12331	11443	10225	8131		

Performance certified is for installation type B: free inlet, ducted outlet. Power rating does not include transmission losses. Performance ratings do not include appurtenances. The sound ratings shown are loudness values in fan sones at 1.5 m (5 ft) in a hemispherical free field calculated per AMCA International Standard 301. Values are for installation type B: free inlet hemispherical sone levels.

# 330 DIRECT DRIVE

Motor HP	Fan RPM	Max BHP	Max Inlet/Outlet Sones	Tip Speed	CFM / Static Pressure (Inches WG)												
					0.125	0.250	0.500	0.750	1.000	1.250	1.500	1.750	2.000	2.250	2.500	2.750	3.000
Min Motor Frame 143T					Max Motor Frame 215T					Max RPM 957							
3/4	363	0.596	7.2 / 8.8	3136	6992	6091											
	392	0.745	8.4 / 10.1	3387	7705	6898											
1	423	0.929	9.8 / 11.7	3654	8456	7689	5198										
	434	1.001	10.3 / 12.3	3749	8720	7966	5826										
1 1/2	458	1.199	11.5 / 13.5	3957	9293	8564	6835										
	493	1.498	13.3 / 15	4259	10120	9430	7998										
2	524	1.791	14.7 / 16.6	4527	10846	10191	8931	6724									
	543	1.989	15.6 / 17.7	4691	11289	10652	9461	7720									
3	576	2.392	17 / 19.6	4976	12054	11447	10311	8909									
	621	2.987	19.3 / 22	5365	13091	12518	11447	10317	8629								
5	683	3.989	22 / 26	5901	14510	13977	12985	12052	10876	9036							
	736	4.984	26 / 29	6359	15716	15221	14289	13403	12480	11231	9226						
7 1/2	783	5.998	28 / 32	6765	16781	16316	15429	14578	13771	12753	11467	9165					
	843	7.495	32 / 37	7283	18135	17704	16867	16064	15303	14549	13520	12287	10196				
10	895	8.982	36 / 41	7732	19306	18899	18099	17343	16606	15900	15093	14125	12909	10872			
	928	9.986	38 / 44	8017	20047	19655	18876	18147	17423	16742	16061	15137	14100	12755	10423		

Performance certified is for installation type B: free inlet, ducted outlet. Power rating does not include transmission losses. Performance ratings do not include appurtenances. The sound ratings shown are loudness values in fan sones at 1.5 m (5 ft) in a hemispherical free field calculated per AMCA International Standard 301. Values are for installation type B: free inlet hemispherical sone levels.

# 365 DIRECT DRIVE

Motor HP	Fan RPM	Max BHP	Max Inlet/Outlet Sones	Tip Speed	CFM / Static Pressure (Inches WG)												
					0.125	0.250	0.500	0.750	1.000	1.250	1.500	1.750	2.000	2.250	2.500	2.750	3.000
Min Motor Frame 143T					Max Motor Frame 215T					Max RPM 757							
3/4	310	0.617	6.6 / 8.3	2962	7940	6705											
	331	0.748	7.5 / 9.2	3163	8648	7565											
1	351	0.887	8.4 / 10.2	3354	9314	8320											
	364	0.985	9 / 10.9	3478	9742	8773											
1 1/2	387	1.176	10.2 / 12.3	3698	10493	9563	6730										
	417	1.499	11.9 / 14.1	3985	11462	10574	8503										
2	443	1.8	13.3 / 15.8	4233	12294	11446	9672										
	459	1.997	14.3 / 16.7	4386	12802	11979	10329	6934									
3	487	2.374	16 / 18.6	4654	13687	12903	11436	9198									
	525	3.001	17.9 / 20	5017	14879	14141	12760	11101	7399								
5	578	3.982	21 / 24	5523	16529	15843	14561	13291	11454								
	622	4.984	23 / 27	5944	17890	17243	16036	14901	13493	11385							
7 1/2	661	5.972	26 / 29	6316	19090	18481	17334	16246	15089	13526	10888						
	712	7.463	29 / 33	6804	20654	20089	19008	17971	16989	15770	14229	11583					
10	757	8.989	32 / 37	7234	22029	21497	20468	19479	18545	17592	16326	14777	12005				

Performance certified is for installation type B: free inlet, ducted outlet. Power rating does not include transmission losses. Performance ratings do not include appurtenances. The sound ratings shown are loudness values in fan sones at 1.5 m (5 ft) in a hemispherical free field calculated per AMCA International Standard 301. Values are for installation type B: free inlet hemispherical sone levels.

# 100-08 DIRECT DRIVE

Indicates G-Plus Motor Speed and HP

Motor HP	Fan RPM	Max BHP	Max Inlet/Outlet Sones	Tip Speed	CFM / Static Pressure (Inches WG)												
					0.000	0.125	0.250	0.500	0.750	1.000	1.250	1.500	1.750	2.000	2.250	2.500	2.750
Min Motor Frame 56					Max Motor Frame 56					Max RPM 1725							
1/6	1725	0.158	12.3 / 12.7	4516	740	692	642	532	347								

Performance certified is for installation type B: free inlet, ducted outlet. Power rating does not include transmission losses. Performance ratings do not include appurtenances. The sound ratings shown are loudness values in fan sones at 1.5 m (5 ft) in a hemispherical free field calculated per AMCA International Standard 301. Values are for installation type B: free inlet hemispherical sone levels.

# 122-08 DIRECT DRIVE

Indicates G-Plus Motor Speed and HP

Motor HP	Fan RPM	Max BHP	Max Inlet/Outlet Sones	Tip Speed	CFM / Static Pressure (Inches WG)												
					0.000	0.125	0.250	0.500	0.750	1.000	1.250	1.500	1.750	2.000	2.250	2.500	2.750
Min Motor Frame 56					Max Motor Frame 56					Max RPM 1725							
1/6	900	0.062	6.2 / 6.3	2886	710	594	445										
1/3	1200	0.147	10.1 / 9.8	3848	947	861	772	520									
1/2	1725	0.436	18 / 18.6	5532	1361	1301	1241	1118	978	782							

Performance certified is for installation type B: free inlet, ducted outlet. Power rating does not include transmission losses. Performance ratings do not include appurtenances. The sound ratings shown are loudness values in fan sones at 1.5 m (5 ft) in a hemispherical free field calculated per AMCA International Standard 301. Values are for installation type B: free inlet hemispherical sone levels.

# 135-08 DIRECT DRIVE

Indicates G-Plus Motor Speed and HP

Motor HP	Fan RPM	Max BHP	Max Inlet/Outlet Sones	Tip Speed	CFM / Static Pressure (Inches WG)												
					0.125	0.250	0.500	0.750	1.000	1.250	1.500	1.750	2.000	2.250	2.500	2.750	3.000
Min Motor Frame 56					Max Motor Frame 145T					Max RPM 2393							
1/6	600	0.021	5.8 / 3.3	2121	409												
1/3	1200	0.172	16 / 11	4241	1154	1049	818										
1/4	1360	0.247	18.1 / 13.1	4807	1333	1242	1052	810									
1/2	1714	0.5	26 / 19.7	6058	1722	1651	1505	1353	1183	943							
	1725	0.509	26 / 20	6097	1734	1663	1518	1368	1200	970							
3/4	1962	0.749	31 / 25	6934	1991	1928	1802	1673	1540	1392	1217	938					
1	2159	0.998	36 / 28	7631	2203	2146	2031	1916	1798	1675	1540	1385	1170	854			
1 1/2	2393	1.361	42 / 33	8458	2453	2402	2299	2195	2090	1984	1872	1755	1625	1472	1255	965	

Performance certified is for installation type B: free inlet, ducted outlet. Power rating does not include transmission losses. Performance ratings do not include appurtenances. The sound ratings shown are loudness values in fan sones at 1.5 m (5 ft) in a hemispherical free field calculated per AMCA International Standard 301. Values are for installation type B: free inlet hemispherical sone levels.

# 150-08 DIRECT DRIVE

Indicates G-Plus Motor Speed and HP

Motor HP	Fan RPM	Max BHP	Max Inlet/Outlet Sones	Tip Speed	CFM / Static Pressure (Inches WG)												
					0.125	0.250	0.500	0.750	1.000	1.250	1.500	1.750	2.000	2.250	2.500	2.750	3.000
Min Motor Frame 56					Max Motor Frame 145T					Max RPM 2154							
1/6	600	0.036	7.1 / 4.1	2356	627												
1/3	900	0.121	12.9 / 8.5	3534	1140	982											
1/4	1141	0.249	16.9 / 12	4481	1519	1397	1137	700									
1/2	1200	0.289	19.4 / 13.4	4712	1609	1494	1253	919									
	1438	0.498	24 / 17.7	5647	1970	1874	1680	1475	1217	735							
3/4	1646	0.748	29 / 22	6464	2280	2198	2029	1858	1675	1454	1116						
1	1812	0.998	34 / 26	7116	2526	2451	2299	2144	1985	1814	1614	1331					
1 1/2	2074	1.498	42 / 32	8145	2912	2846	2714	2580	2445	2307	2163	2002	1820	1576	1234		
2	2154	1.68	44 / 34	8459	3029	2966	2839	2710	2581	2450	2312	2167	2007	1818	1551	1193	

Performance certified is for installation type B: free inlet, ducted outlet. Power rating does not include transmission losses. Performance ratings do not include appurtenances. The sound ratings shown are loudness values in fan sones at 1.5 m (5 ft) in a hemispherical free field calculated per AMCA International Standard 301. Values are for installation type B: free inlet hemispherical sone levels.

# 165-08 DIRECT DRIVE

Indicates G-Plus Motor Speed and HP

Motor HP	Fan RPM	Max BHP	Max Inlet/Outlet Sones	Tip Speed	CFM / Static Pressure (Inches WG)												
					0.125	0.250	0.500	0.750	1.000	1.250	1.500	1.750	2.000	2.250	2.500	2.750	3.000
Min Motor Frame 56					Max Motor Frame 184T					Max RPM 2000							
1/3	600	0.057	9 / 5.1	2592	892	495											
1/2	900	0.193	15.4 / 10.2	3888	1553	1382	950										
1/4	974	0.25	15.9 / 11.4	4207	1707	1550	1200										
1/2	1227	0.5	23 / 16.2	5300	2222	2099	1848	1566	1129								
3/4	1200	0.468	23 / 16	5184	2168	2042	1784	1490	990								
	1404	0.749	28 / 20	6065	2576	2469	2251	2025	1772	1415							
1	1546	1.001	32 / 24	6678	2857	2760	2564	2364	2153	1914	1587	1040					
1 1/2	1769	1.497	39 / 30	7642	3296	3211	3040	2867	2692	2508	2308	2077	1759	1292			
2	1947	1.999	46 / 35	8410	3644	3567	3412	3255	3097	2938	2770	2592	2397	2163	1821	1373	
3	2000	2.165	48 / 37	8639	3747	3672	3522	3369	3216	3061	2900	2735	2546	2336	2067	1694	

Performance certified is for installation type B: free inlet, ducted outlet. Power rating does not include transmission losses. Performance ratings do not include appurtenances. The sound ratings shown are loudness values in fan sones at 1.5 m (5 ft) in a hemispherical free field calculated per AMCA International Standard 301. Values are for installation type B: free inlet hemispherical sone levels.

# 182-08 DIRECT DRIVE

Motor HP	Fan RPM	Max BHP	Max Inlet/Outlet Sones	Tip Speed	CFM / Static Pressure (Inches WG)													
					0.125	0.250	0.500	0.750	1.000	1.250	1.500	1.750	2.000	2.250	2.500	2.750	3.000	
Min Motor Frame 56					Max Motor Frame 184T					Max RPM 1770								
1/4	792	0.248	11.9 / 12.2	3784	2119	1940	1455											
1/2	998	0.499	15.8 / 16.5	4768	2754	2612	2326	1927										
3/4	1142	0.748	20 / 21	5456	3189	3065	2817	2553	2175									
1	1257	0.996	24 / 25	6006	3534	3422	3196	2969	2696	2331								
1 1/2	1439	1.499	29 / 31	6875	4076	3978	3781	3584	3385	3152	2858	2445						
2	1583	1.997	33 / 36	7563	4503	4414	4235	4056	3876	3695	3480	3222	2903	2333				
3	1770	2.789	39 / 43	8457	5055	4975	4815	4655	4495	4334	4172	4002	3781	3536	3247	2778		

Performance certified is for installation type B: free inlet, ducted outlet. Power rating does not include transmission losses. Performance ratings do not include appurtenances. The sound ratings shown are loudness values in fan sones at 1.5 m (5 ft) in a hemispherical free field calculated per AMCA International Standard 301. Values are for installation type B: free inlet hemispherical sone levels.

# 200-08 DIRECT DRIVE

600 Indicates G-Plus Motor Speed and HP

Motor HP	Fan RPM	Max BHP	Max Inlet/Outlet Sones	Tip Speed	CFM / Static Pressure (Inches WG)													
					0.125	0.250	0.500	0.750	1.000	1.250	1.500	1.750	2.000	2.250	2.500	2.750	3.000	
Min Motor Frame 56					Max Motor Frame 184T					Max RPM 1615								
3/4	<span style="background-color: #c8e6c9;">600</span>	0.17	9.6 / 9.8	3142	2032	1761												
1/4	680	0.241	11.2 / 11.5	3560	2369	2139	1308											
1/2	856	0.494	16.1 / 16.7	4482	3087	2906	2530	1891										
3/4	980	0.747	19.7 / 20	5131	3584	3425	3107	2731	2090									
1	1079	0.999	22 / 23	5650	3976	3833	3544	3254	2845	2119								
1 1/2	1235	1.5	27 / 29	6466	4590	4465	4213	3960	3707	3358	2884							
2	1359	1.998	32 / 34	7116	5075	4961	4733	4503	4273	4030	3715	3328	2604					
3	1556	2.999	39 / 42	8147	5842	5742	5543	5343	5143	4942	4740	4492	4210	3873	3389			
5	1615	3.349	41 / 45	8456	6071	5975	5783	5590	5397	5204	5010	4806	4540	4246	3899	3334		

Performance certified is for installation type B: free inlet, ducted outlet. Power rating does not include transmission losses. Performance ratings do not include appurtenances. The sound ratings shown are loudness values in fan sones at 1.5 m (5 ft) in a hemispherical free field calculated per AMCA International Standard 301. Values are for installation type B: free inlet hemispherical sone levels.

# 222-08 DIRECT DRIVE

Motor HP	Fan RPM	Max BHP	Max Inlet/Outlet Sones	Tip Speed	CFM / Static Pressure (Inches WG)													
					0.125	0.250	0.500	0.750	1.000	1.250	1.500	1.750	2.000	2.250	2.500	2.750	3.000	
Min Motor Frame 56					Max Motor Frame 184T					Max RPM 1458								
1/4	569	0.245	10.1 / 10.5	3314	2689	2383												
1/2	717	0.499	15.1 / 15.6	4177	3529	3288	2743											
3/4	821	0.749	18.5 / 19.1	4782	4106	3896	3473	2886										
1	903	0.994	21 / 22	5260	4557	4365	3981	3546	2874									
1 1/2	1034	1.494	24 / 25	6023	5269	5103	4768	4432	4030	3498								
2	1138	1.994	29 / 30	6629	5831	5680	5376	5071	4765	4370	3879	2899						
3	1303	3	37 / 39	7590	6718	6586	6321	6055	5789	5521	5207	4829	4369	3551				
5	1458	4.2	43 / 47	8493	7547	7429	7192	6955	6718	6479	6240	5994	5667	5309	4899	4240		

Performance certified is for installation type B: free inlet, ducted outlet. Power rating does not include transmission losses. Performance ratings do not include appurtenances. The sound ratings shown are loudness values in fan sones at 1.5 m (5 ft) in a hemispherical free field calculated per AMCA International Standard 301. Values are for installation type B: free inlet hemispherical sone levels.



# 245-08 DIRECT DRIVE

Motor HP	Fan RPM	Max BHP	Max Inlet/Outlet Sones	Tip Speed	CFM / Static Pressure (Inches WG)												
					0.125	0.250	0.500	0.750	1.000	1.250	1.500	1.750	2.000	2.250	2.500	2.750	3.000
Min Motor Frame 56					Max Motor Frame 213T					Max RPM 1394							
1/2	618	0.495	10.2 / 12.6	3964	4316	3936	2956										
3/4	707	0.749	12.6 / 16	4535	5034	4710	3984	2764									
1	778	0.993	14.5 / 18.8	4990	5600	5308	4695	3891									
1 1/2	891	1.499	18.1 / 23	5715	6491	6241	5718	5141	4405	2988							
2	980	1.997	21 / 27	6286	7187	6960	6491	6001	5426	4715	3388						
3	1122	2.995	28 / 35	7197	8290	8092	7688	7276	6841	6343	5761	5023					
5	1330	4.988	37 / 48	8531	9895	9728	9393	9047	8699	8337	7970	7530	7057	6529	5838	4675	
7 1/2	1394	5.746	40 / 52	8941	10387	10227	9908	9581	9249	8910	8560	8192	7758	7290	6786	6109	

Performance certified is for installation type B: free inlet, ducted outlet. Power rating does not include transmission losses. Performance ratings do not include appurtenances. The sound ratings shown are loudness values in fan sones at 1.5 m (5 ft) in a hemispherical free field calculated per AMCA International Standard 301. Values are for installation type B: free inlet hemispherical sone levels.

# 270-08 DIRECT DRIVE

Motor HP	Fan RPM	Max BHP	Max Inlet/Outlet Sones	Tip Speed	CFM / Static Pressure (Inches WG)												
					0.125	0.250	0.500	0.750	1.000	1.250	1.500	1.750	2.000	2.250	2.500	2.750	3.000
Min Motor Frame 56					Max Motor Frame 213T					Max RPM 1240							
1/2	525	0.491	8.9 / 11.5	3711	4849	4349	2775										
3/4	601	0.748	11.8 / 14.7	4248	5678	5255	4247										
1	662	0.999	14 / 17.3	4679	6333	5952	5123	3903									
2	834	1.997	19.3 / 25	5895	8151	7857	7246	6594	5756	4501							
3	954	2.991	24 / 31	6743	9403	9146	8619	8074	7491	6774	5876	4192					
5	1132	4.999	35 / 43	8002	11246	11030	10595	10144	9686	9211	8672	8065	7381	6414			
7 1/2	1240	6.578	40 / 52	8765	12358	12161	11766	11359	10947	10524	10090	9606	9069	8460	7752	6762	

Performance certified is for installation type B: free inlet, ducted outlet. Power rating does not include transmission losses. Performance ratings do not include appurtenances. The sound ratings shown are loudness values in fan sones at 1.5 m (5 ft) in a hemispherical free field calculated per AMCA International Standard 301. Values are for installation type B: free inlet hemispherical sone levels.

# 300-08 DIRECT DRIVE

Motor HP	Fan RPM	Max BHP	Max Inlet/Outlet Sones	Tip Speed	CFM / Static Pressure (Inches WG)												
					0.125	0.250	0.500	0.750	1.000	1.250	1.500	1.750	2.000	2.250	2.500	2.750	3.000
Min Motor Frame 56					Max Motor Frame 215T					Max RPM 1028							
1/2	429	0.496	8.2 / 9.8	3369	5391	4767											
3/4	491	0.747	10.8 / 12.3	3856	6335	5795	4426										
1	540	0.998	12.7 / 14.5	4241	7069	6580	5491										
1 1/2	618	1.493	16 / 18.3	4854	8221	7795	6933	5797									
2	680	1.99	18.8 / 21	5341	9127	8741	7961	7088	5847								
3	779	2.993	23 / 27	6118	10561	10225	9547	8862	8064	7059	4786						
5	923	4.99	31 / 36	7249	12628	12344	11775	11201	10623	10014	9268	8381	6909				
7 1/2	1028	6.882	38 / 43	8074	14126	13871	13361	12847	12332	11811	11289	10619	9885	9006	7537		

Performance certified is for installation type B: free inlet, ducted outlet. Power rating does not include transmission losses. Performance ratings do not include appurtenances. The sound ratings shown are loudness values in fan sones at 1.5 m (5 ft) in a hemispherical free field calculated per AMCA International Standard 301. Values are for installation type B: free inlet hemispherical sone levels.

# 330-08 DIRECT DRIVE

Motor HP	Fan RPM	Max BHP	Max Inlet/Outlet Sones	Tip Speed	CFM / Static Pressure (Inches WG)												
					0.125	0.250	0.500	0.750	1.000	1.250	1.500	1.750	2.000	2.250	2.500	2.750	3.000
Min Motor Frame 143T					Max Motor Frame 215T					Max RPM 957							
3/4	419	0.737	9.6 / 11.5	3620	7114	6415	4146										
1	461	0.999	11.7 / 13.7	3983	7959	7327	5795										
1 1/2	527	1.488	14.9 / 16.7	4553	9266	8715	7571	5797									
2	581	2.003	17.3 / 19.8	5019	10322	9824	8816	7580	4984								
3	665	3.002	22 / 25	5745	11948	11515	10640	9754	8580	6713							
5	788	4.991	29 / 33	6808	14306	13941	13205	12466	11717	10812	9724	8016					
7 1/2	902	7.502	36 / 41	7793	16475	16156	15516	14871	14224	13570	12839	11999	10992	9610			
10	957	8.956	40 / 46	8268	17517	17216	16614	16007	15399	14785	14168	13427	12618	11667	10378	7668	

Performance certified is for installation type B: free inlet, ducted outlet. Power rating does not include transmission losses. Performance ratings do not include appurtenances. The sound ratings shown are loudness values in fan sones at 1.5 m (5 ft) in a hemispherical free field calculated per AMCA International Standard 301. Values are for installation type B: free inlet hemispherical sone levels.

# 365-08 DIRECT DRIVE

Motor HP	Fan RPM	Max BHP	Max Inlet/Outlet Sones	Tip Speed	CFM / Static Pressure (Inches WG)												
					0.125	0.250	0.500	0.750	1.000	1.250	1.500	1.750	2.000	2.250	2.500	2.750	3.000
Min Motor Frame 143T					Max Motor Frame 215T					Max RPM 839							
3/4	419	0.737	9.6 / 11.5	3620	7114	6415	4146										
1	461	0.999	11.7 / 13.7	3983	7959	7327	5795										
1 1/2	527	1.488	14.9 / 16.7	4553	9266	8715	7571	5797									
2	581	2.003	17.3 / 19.8	5019	10322	9824	8816	7580	4984								
3	665	3.002	22 / 25	5745	11948	11515	10640	9754	8580	6713							
5	788	4.991	29 / 33	6808	14306	13941	13205	12466	11717	10812	9724	8016					
7 1/2	902	7.502	36 / 41	7793	16475	16156	15516	14871	14224	13570	12839	11999	10992	9610			
10	957	8.956	40 / 46	8268	17517	17216	16614	16007	15399	14785	14168	13427	12618	11667	10378	7668	

Performance certified is for installation type B: free inlet, ducted outlet. Power rating does not include transmission losses. Performance ratings do not include appurtenances. The sound ratings shown are loudness values in fan sones at 1.5 m (5 ft) in a hemispherical free field calculated per AMCA International Standard 301. Values are for installation type B: free inlet hemispherical sone levels.

# 100-05 DIRECT DRIVE

Indicates G-Plus Motor Speed and HP

Motor HP	Fan RPM	Max BHP	Max Inlet/Outlet Sones	Tip Speed	CFM / Static Pressure (Inches WG)												
					0.000	0.125	0.250	0.500	0.750	1.000	1.250	1.500	1.750	2.000	2.250	2.500	2.750
Min Motor Frame 56					Max Motor Frame 56					Max RPM 1725							
1/2	1725	0.113	10.7 / 11.3	4516	599	557	514	417	282								

Performance certified is for installation type B: free inlet, ducted outlet. Power rating does not include transmission losses. Performance ratings do not include appurtenances. The sound ratings shown are loudness values in fan sones at 1.5 m (5 ft) in a hemispherical free field calculated per AMCA International Standard 301. Values are for installation type B: free inlet hemispherical sone levels.

# 122-05 DIRECT DRIVE

Indicates G-Plus Motor Speed and HP

Motor HP	Fan RPM	Max BHP	Max Inlet/Outlet Sones	Tip Speed	CFM / Static Pressure (Inches WG)												
					0.000	0.125	0.250	0.500	0.750	1.000	1.250	1.500	1.750	2.000	2.250	2.500	2.750
Min Motor Frame 56					Max Motor Frame 56					Max RPM 1725							
1/6	1200	0.104	8.8 / 8.6	3848	766	692	514	412									
1/3	1725	0.311	10.7 / 11.3	5532	1101	1050	998	890	768	617							

Performance certified is for installation type B: free inlet, ducted outlet. Power rating does not include transmission losses. Performance ratings do not include appurtenances. The sound ratings shown are loudness values in fan sones at 1.5 m (5 ft) in a hemispherical free field calculated per AMCA International Standard 301. Values are for installation type B: free inlet hemispherical sone levels.

# 135-05 DIRECT DRIVE

Indicates G-Plus Motor Speed and HP

Motor HP	Fan RPM	Max BHP	Max Inlet/Outlet Sones	Tip Speed	CFM / Static Pressure (Inches WG)												
					0.125	0.250	0.500	0.750	1.000	1.250	1.500	1.750	2.000	2.250	2.500	2.750	3.000
Min Motor Frame 56					Max Motor Frame 145T					Max RPM 2395							
1/6	900	0.053	4.6 / 4.9	3181	630	505											
1/3	1200	0.126	7.2 / 7.9	4241	905	820	625										
1/4	1509	0.25	11.2 / 11.9	5333	1176	1110	974	814	620								
1/2	1725	0.373	13.9 / 15	6097	1362	1304	1187	1062	919	750							
	1901	0.5	16.3 / 17.5	6719	1512	1460	1355	1246	1127	993	839	629					
3/4	2176	0.75	20 / 21	7691	1745	1699	1608	1515	1419	1315	1202	1078	940	765			
1	2395	1	23 / 25	8465	1929	1888	1805	1721	1636	1549	1453	1352	1243	1126	994	819	

Performance certified is for installation type B: free inlet, ducted outlet. Power rating does not include transmission losses. Performance ratings do not include appurtenances. The sound ratings shown are loudness values in fan sones at 1.5 m (5 ft) in a hemispherical free field calculated per AMCA International Standard 301. Values are for installation type B: free inlet hemispherical sone levels.

# 150-05 DIRECT DRIVE

Indicates G-Plus Motor Speed and HP

Motor HP	Fan RPM	Max BHP	Max Inlet/Outlet Sones	Tip Speed	CFM / Static Pressure (Inches WG)													
					0.125	0.250	0.500	0.750	1.000	1.250	1.500	1.750	2.000	2.250	2.500	2.750	3.000	
Min Motor Frame 56					Max Motor Frame 145T					Max RPM 2154								
1/6	600	0.026	2.5 / 2.6	2356	484													
1/3	1200	0.212	9.4 / 9.8	4712	1263	1170	969	712										
1/4	1266	0.25	10.2 / 10.7	4972	1342	1254	1068	842										
1/2	1595	0.5	15 / 16	6264	1731	1662	1522	1373	1205	1013	757							
3/4	1725	0.633	17 / 18.3	6774	1883	1819	1690	1557	1412	1251	1065	825						
	1825	0.75	19 / 20	7167	2000	1939	1818	1693	1561	1416	1254	1071	816					
1	2009	1	22 / 23	7889	2213	2158	2048	1937	1822	1699	1567	1423	1264	1076				
1 1/2	2154	1.233	24 / 26	8459	2380	2329	2226	2123	2017	1910	1791	1666	1532	1387	1224	1005		

Performance certified is for installation type B: free inlet, ducted outlet. Power rating does not include transmission losses. Performance ratings do not include appurtenances. The sound ratings shown are loudness values in fan sones at 1.5 m (5 ft) in a hemispherical free field calculated per AMCA International Standard 301. Values are for installation type B: free inlet hemispherical sone levels.

# 165-05 DIRECT DRIVE

Indicates G-Plus Motor Speed and HP

Motor HP	Fan RPM	Max BHP	Max Inlet/Outlet Sones	Tip Speed	CFM / Static Pressure (Inches WG)													
					0.125	0.250	0.500	0.750	1.000	1.250	1.500	1.750	2.000	2.250	2.500	2.750	3.000	
Min Motor Frame 56					Max Motor Frame 184T					Max RPM 2000								
1/6	600	0.042	3.9 / 3.4	2592	694	404												
1/3	900	0.144	7.7 / 7.6	3888	1217	1078	729											
1/4	1080	0.248	9.5 / 10	4665	1510	1397	1149	832										
	1200	0.343	11.3 / 11.8	5184	1702	1600	1388	1137	807									
1/2	1360	0.5	13.9 / 14.6	5875	1954	1865	1682	1484	1252	966								
	1557	0.75	17.3 / 18.4	6726	2261	2184	2026	1864	1686	1487	1258	947						
1	1714	1	20 / 22	7404	2504	2434	2291	2146	1996	1831	1649	1446	1200					
1 1/2	1962	1.5	25 / 27	8475	2886	2824	2700	2575	2448	2318	2175	2024	1863	1688	1492	1234		
2	2000	2	25 / 27	8639	2944	2884	2762	2640	2515	2388	2251	2106	1951	1781	1596	1374		

Performance certified is for installation type B: free inlet, ducted outlet. Power rating does not include transmission losses. Performance ratings do not include appurtenances. The sound ratings shown are loudness values in fan sones at 1.5 m (5 ft) in a hemispherical free field calculated per AMCA International Standard 301. Values are for installation type B: free inlet hemispherical sone levels.

# 182-05 DIRECT DRIVE

Indicates G-Plus Motor Speed and HP

Motor HP	Fan RPM	Max BHP	Max Inlet/Outlet Sones	Tip Speed	CFM / Static Pressure (Inches WG)												
					0.125	0.250	0.500	0.750	1.000	1.250	1.500	1.750	2.000	2.250	2.500	2.750	3.000
Min Motor Frame 56					Max Motor Frame 184T					Max RPM 1770							
1/3	600	0.077	5.2 / 4.5	2867	1166	931											
1/4	890	0.249	10.8 / 9.5	4252	1882	1756	1458										
1/2	900	0.257	10.9 / 9.7	4300	1906	1781	1490	907									
	1121	0.496	13 / 13.8	5356	2425	2332	2124	1883	1551								
3/4	1284	0.749	16.2 / 17	6135	2803	2722	2548	2358	2142	1870	1368						
1	1413	0.998	18.8 / 19.7	6751	3100	3026	2872	2709	2529	2324	2073	1665					
1 1/2	1617	1.499	24 / 25	7726	3568	3503	3374	3233	3088	2932	2761	2571	2339	1988			
2	1770	1.963	29 / 30	8457	3917	3858	3740	3616	3486	3351	3208	3054	2885	2685	2440	2078	

Performance certified is for installation type B: free inlet, ducted outlet. Power rating does not include transmission losses. Performance ratings do not include appurtenances. The sound ratings shown are loudness values in fan sones at 1.5 m (5 ft) in a hemispherical free field calculated per AMCA International Standard 301. Values are for installation type B: free inlet hemispherical sone levels.

# 200-05 DIRECT DRIVE

Indicates G-Plus Motor Speed and HP

Motor HP	Fan RPM	Max BHP	Max Inlet/Outlet Sones	Tip Speed	CFM / Static Pressure (Inches WG)												
					0.125	0.250	0.500	0.750	1.000	1.250	1.500	1.750	2.000	2.250	2.500	2.750	3.000
Min Motor Frame 56					Max Motor Frame 184T					Max RPM 1615							
1/3	600	0.12	5.8 / 5.5	3142	1577	1344											
1/4	764	0.25	10.9 / 9	4000	2109	1946	1533										
3/4	900	0.407	12 / 11.7	4712	2534	2401	2105	1700									
1/2	963	0.5	12.8 / 13.2	5042	2728	2606	2335	2008	1405								
3/4	1102	0.75	15.2 / 16	5770	3154	3051	2825	2577	2271	1799							
1	1213	0.999	17.6 / 18.5	6351	3492	3398	3197	2981	2741	2447	2022						
1 1/2	1388	1.497	22 / 23	7268	4021	3939	3771	3590	3397	3192	2956	2666	2223				
2	1528	1.997	26 / 27	8001	4443	4368	4218	4056	3892	3712	3527	3312	3065	2754	2272		
3	1615	2.357	29 / 30	8456	4704	4633	4492	4342	4186	4024	3852	3668	3464	3224	2930	2495	

Performance certified is for installation type B: free inlet, ducted outlet. Power rating does not include transmission losses. Performance ratings do not include appurtenances. The sound ratings shown are loudness values in fan sones at 1.5 m (5 ft) in a hemispherical free field calculated per AMCA International Standard 301. Values are for installation type B: free inlet hemispherical sone levels.

# 222-05 DIRECT DRIVE

Motor HP	Fan RPM	Max BHP	Max Inlet/Outlet Sones	Tip Speed	CFM / Static Pressure (Inches WG)												
					0.125	0.250	0.500	0.750	1.000	1.250	1.500	1.750	2.000	2.250	2.500	2.750	3.000
Min Motor Frame 56					Max Motor Frame 184T					Max RPM 1458							
3/4	600	0.2	8.4 / 8.5	3495	2227	1983	1063										
1/4	640	0.246	11.5 / 9.8	3728	2407	2182	1543										
1/2	806	0.497	12.5 / 11.7	4695	3123	2958	2590	2079									
3/4	923	0.746	14.3 / 15.2	5377	3620	3481	3174	2819	2335								
1	1015	0.998	16.4 / 17.3	5912	4007	3881	3610	3313	2966	2465							
1 1/2	1162	1.495	20 / 21	6769	4621	4511	4283	4041	3775	3472	3102	2511					
2	1279	1.995	23 / 25	7450	5107	5008	4807	4588	4359	4118	3838	3510	3076	2341			
3	1458	2.956	29 / 30	8493	5848	5761	5586	5402	5210	5011	4800	4574	4324	4032	3680	3165	

Performance certified is for installation type B: free inlet, ducted outlet. Power rating does not include transmission losses. Performance ratings do not include appurtenances. The sound ratings shown are loudness values in fan sones at 1.5 m (5 ft) in a hemispherical free field calculated per AMCA International Standard 301. Values are for installation type B: free inlet hemispherical sone levels.

# 245-05 DIRECT DRIVE

Motor HP	Fan RPM	Max BHP	Max Inlet/Outlet Sones	Tip Speed	CFM / Static Pressure (Inches WG)												
					0.125	0.250	0.500	0.750	1.000	1.250	1.500	1.750	2.000	2.250	2.500	2.750	3.000
Min Motor Frame 56					Max Motor Frame 213T					Max RPM 1394							
1/2	695	0.5	9.8 / 17.6	4458	3580	3351	2814	1950									
3/4	796	0.749	12.3 / 25	5106	4161	3964	3547	2987	2164								
1	876	1.001	14.3 / 25	5619	4616	4441	4070	3643	3065	2189							
1 1/2	1002	1.497	18 / 27	6427	5327	5174	4856	4523	4132	3631	3005						
2	1103	1.997	21 / 29	7075	5893	5754	5470	5177	4865	4482	4025	3493	2684				
3	1263	3	26 / 30	8101	6785	6664	6422	6167	5911	5637	5341	4966	4553	4087	3484		
5	1394	4.031	31 / 34	8941	7513	7403	7184	6958	6726	6492	6245	5997	5660	5307	4929	4495	3952

Performance certified is for installation type B: free inlet, ducted outlet. Power rating does not include transmission losses. Performance ratings do not include appurtenances. The sound ratings shown are loudness values in fan sones at 1.5 m (5 ft) in a hemispherical free field calculated per AMCA International Standard 301. Values are for installation type B: free inlet hemispherical sone levels.

# 270-05 DIRECT DRIVE

Motor HP	Fan RPM	Max BHP	Max Inlet/Outlet Sones	Tip Speed	CFM / Static Pressure (Inches WG)												
					0.125	0.250	0.500	0.750	1.000	1.250	1.500	1.750	2.000	2.250	2.500	2.750	3.000
Min Motor Frame 56					Max Motor Frame 213T					Max RPM 1181							
1/2	591	0.498	8.8 / 14.8	4178	4040	3741	2976										
3/4	677	0.75	11.3 / 19	4785	4706	4449	3901	3072									
1	745	1	13.3 / 26	5266	5226	4996	4508	3891	3025								
1 1/2	853	1.5	16.6 / 27	6030	6045	5848	5433	4993	4409	3683							
2	938	1.998	19.2 / 29	6630	6685	6506	6134	5745	5320	4748	4083	3089					
3	1074	2.996	24 / 31	7592	7704	7547	7229	6898	6555	6201	5723	5196	4591	3734			
5	1181	3.985	28 / 32	8348	8501	8358	8072	7774	7473	7155	6833	6407	5941	5433	4835	3987	

Performance certified is for installation type B: free inlet, ducted outlet. Power rating does not include transmission losses. Performance ratings do not include appurtenances. The sound ratings shown are loudness values in fan sones at 1.5 m (5 ft) in a hemispherical free field calculated per AMCA International Standard 301. Values are for installation type B: free inlet hemispherical sone levels.

# 300-05 DIRECT DRIVE

Motor HP	Fan RPM	Max BHP	Max Inlet/Outlet Sones	Tip Speed	CFM / Static Pressure (Inches WG)												
					0.125	0.250	0.500	0.750	1.000	1.250	1.500	1.750	2.000	2.250	2.500	2.750	3.000
Min Motor Frame 56					Max Motor Frame 215T					Max RPM 1013							
1/2	491	0.5	7.7 / 8.6	3856	4631	4222	3149										
3/4	562	0.745	9.6 / 10.9	4414	5398	5059	4250	2884									
1	618	0.997	11.2 / 12.8	4854	5995	5697	5004	4148									
1 1/2	708	1.5	14.2 / 16.1	5561	6945	6698	6140	5476	4699								
2	779	1.997	16.8 / 18.9	6118	7688	7464	6973	6413	5790	5033	3476						
3	892	2.996	21.3 / 24	7006	8865	8669	8259	7817	7309	6767	6155	5339					
5	1013	4.39	25.7 / 29	7956	10117	9945	9599	9216	8826	8373	7905	7414	6835	6086	4774		

Performance certified is for installation type B: free inlet, ducted outlet. Power rating does not include transmission losses. Performance ratings do not include appurtenances. The sound ratings shown are loudness values in fan sones at 1.5 m (5 ft) in a hemispherical free field calculated per AMCA International Standard 301. Values are for installation type B: free inlet hemispherical sone levels.

# 330-05 DIRECT DRIVE

Motor HP	Fan RPM	Max BHP	Max Inlet/Outlet Sones	Tip Speed	CFM / Static Pressure (Inches WG)												
					0.125	0.250	0.500	0.750	1.000	1.250	1.500	1.750	2.000	2.250	2.500	2.750	3.000
Min Motor Frame 143T					Max Motor Frame 215T					Max RPM 957							
3/4	479	0.746	8.9 / 10.1	4138	6075	5630	4528										
1	528	0.996	10.5 / 11.8	4562	6774	6382	5455	4149									
1 1/2	604	1.494	13.1 / 14.8	5218	7848	7523	6772	5894	4609								
2	665	1.999	15.3 / 17.5	5745	8702	8412	7768	7013	6142	4730							
3	761	2.993	19.4 / 22	6575	10036	9783	9243	8648	7974	7236	6265						
5	902	4.996	26 / 29	7793	11982	11768	11342	10864	10371	9809	9221	8594	7862	6750			
7 1/2	957	5.966	28 / 32	8268	12737	12537	12135	11697	11244	10740	10210	9642	9035	8345	7369	5596	

Performance certified is for installation type B: free inlet, ducted outlet. Power rating does not include transmission losses. Performance ratings do not include appurtenances. The sound ratings shown are loudness values in fan sones at 1.5 m (5 ft) in a hemispherical free field calculated per AMCA International Standard 301. Values are for installation type B: free inlet hemispherical sone levels.

# 365-05 DIRECT DRIVE

Motor HP	Fan RPM	Max BHP	Max Inlet/Outlet Sones	Tip Speed	CFM / Static Pressure (Inches WG)												
					0.125	0.250	0.500	0.750	1.000	1.250	1.500	1.750	2.000	2.250	2.500	2.750	3.000
Min Motor Frame 143T					Max Motor Frame 215T					Max RPM 833							
3/4	405	0.748	8 / 9.3	3870	6884	6282	4714										
1	446	0.996	9.6 / 11	4262	7682	7158	5890										
1 1/2	510	1.494	12.2 / 13.7	4873	8913	8475	7456	6200									
2	562	1.993	14.3 / 16	5370	9903	9522	8644	7611	6267								
3	643	2.996	17.6 / 20	6144	11432	11102	10378	9556	8640	7551	5338						
5	763	5.005	23 / 26	7291	13679	13401	12829	12199	11505	10754	9959	9002	7459				
7 1/2	833	6.508	27 / 30	7960	14983	14728	14218	13650	13074	12404	11711	10984	10129	9024	7095		

Performance certified is for installation type B: free inlet, ducted outlet. Power rating does not include transmission losses. Performance ratings do not include appurtenances. The sound ratings shown are loudness values in fan sones at 1.5 m (5 ft) in a hemispherical free field calculated per AMCA International Standard 301. Values are for installation type B: free inlet hemispherical sone levels.

# 135 BELT DRIVE

Motor HP	Fan RPM	Max BHP	Max Inlet/Outlet Sones	Tip Speed	CFM / Static Pressure (Inches WG)												
					0.125	0.250	0.500	0.750	1.000	1.250	1.500	1.750	2.000	2.250	2.500	2.750	3.000
Min Motor Frame 56					Max Motor Frame 145T					Max RPM 2332							
1/4	1129	0.167	13.4 / 9.5	3990	1229	1105	823										
	1194	0.2	14.7 / 10.5	4220	1313	1196	948										
	1286	0.248	16.6 / 11.9	4545	1431	1324	1102	736									
1/2	1504	0.398	21 / 15.6	5316	1707	1616	1430	1232	917								
	1621	0.498	24 / 17.9	5729	1854	1769	1597	1421	1215								
3/4	1722	0.598	26 / 19.9	6086	1980	1900	1739	1574	1397	1156							
	1855	0.749	29 / 22	6556	2144	2071	1921	1770	1615	1442	1165						
1	1971	0.896	31 / 25	6966	2287	2218	2078	1936	1791	1639	1458	1149					
	2042	0.999	33 / 26	7217	2375	2308	2173	2036	1897	1756	1596	1383					
1 1/2	2170	1.2	36 / 29	7669	2532	2469	2342	2214	2084	1952	1814	1661	1436				
	2332	1.49	40 / 32	8242	2730	2671	2553	2434	2314	2194	2070	1940	1799	1609	1287		

Performance certified is for installation type B: free inlet, ducted outlet. Power rating does not include transmission losses. Performance ratings do not include appurtenances. The sound ratings shown are loudness values in fan sones at 1.5 m (5 ft) in a hemispherical free field calculated per AMCA International Standard 301. Values are for installation type B: free inlet hemispherical sone levels.

# 150 BELT DRIVE

Motor HP	Fan RPM	Max BHP	Max Inlet/Outlet Sones	Tip Speed	CFM / Static Pressure (Inches WG)												
					0.125	0.250	0.500	0.750	1.000	1.250	1.500	1.750	2.000	2.250	2.500	2.750	3.000
Min Motor Frame 56					Max Motor Frame 145T					Max RPM 2099							
1/4	943	0.163	12.3 / 9	3703	1386	1220	732										
	1002	0.197	13.7 / 9.6	3935	1492	1337	974										
	1079	0.249	15.4 / 10.8	4237	1629	1486	1180										
1/2	1262	0.398	19.8 / 14.2	4956	1950	1828	1579	1295									
	1360	0.499	22 / 16	5341	2119	2006	1778	1535	1161								
3/4	1445	0.596	24 / 17.9	5675	2265	2159	1945	1725	1459								
	1556	0.747	27 / 20	6110	2455	2357	2158	1956	1739	1455							
1	1654	0.9	29 / 23	6495	2621	2529	2343	2154	1960	1743	1369						
	1713	0.998	31 / 24	6727	2721	2632	2453	2271	2085	1882	1620						
1 1/2	1820	1.199	34 / 27	7147	2902	2818	2650	2479	2306	2129	1929	1628					
	1961	1.5	38 / 30	7701	3139	3062	2905	2748	2589	2426	2258	2072	1809				
2	2099	1.839	42 / 33	8243	3370	3298	3153	3006	2858	2708	2556	2395	2221	1988	1590		

Performance certified is for installation type B: free inlet, ducted outlet. Power rating does not include transmission losses. Performance ratings do not include appurtenances. The sound ratings shown are loudness values in fan sones at 1.5 m (5 ft) in a hemispherical free field calculated per AMCA International Standard 301. Values are for installation type B: free inlet hemispherical sone levels.



# 165 BELT DRIVE

Motor HP	Fan RPM	Max BHP	Max Inlet/Outlet Sones	Tip Speed	CFM / Static Pressure (Inches WG)												
					0.125	0.250	0.500	0.750	1.000	1.250	1.500	1.750	2.000	2.250	2.500	2.750	3.000
Min Motor Frame 56					Max Motor Frame 184T					Max RPM 2000							
1/4	809	0.167	12 / 8.2	3495	1560	1345											
	855	0.195	12.7 / 9.1	3693	1671	1470	871										
	921	0.248	14.5 / 10.4	3978	1829	1643	1218										
1/2	1077	0.397	18.6 / 13	4652	2196	2039	1716	1253									
	1160	0.499	21 / 14.7	5011	2388	2243	1946	1615									
3/4	1233	0.599	23 / 16.4	5326	2556	2420	2142	1847	1384								
	1328	0.747	26 / 18.5	5737	2773	2647	2390	2127	1821	1204							
1	1411	0.898	28 / 20	6095	2962	2843	2603	2357	2094	1740							
	1461	0.995	29 / 22	6311	3075	2961	2729	2493	2247	1945	1377						
1 1/2	1553	1.198	32 / 24	6708	3283	3175	2957	2736	2511	2264	1944	1239					
	1673	1.499	36 / 27	7227	3552	3453	3251	3047	2840	2629	2392	2079	1454				
2	1778	1.801	40 / 30	7680	3788	3694	3504	3313	3120	2923	2718	2491	2161	1578			
	1841	1.995	42 / 32	7953	3928	3838	3655	3471	3284	3096	2904	2690	2432	2025			
3	1957	2.398	46 / 36	8454	4187	4102	3930	3757	3583	3407	3227	3047	2841	2597			
	2000	2.556	48 / 37	8639	4283	4199	4032	3862	3692	3520	3345	3169	2975	2763	2487	2009	

Performance certified is for installation type B: free inlet, ducted outlet. Power rating does not include transmission losses. Performance ratings do not include appurtenances. The sound ratings shown are loudness values in fan sones at 1.5 m (5 ft) in a hemispherical free field calculated per AMCA International Standard 301. Values are for installation type B: free inlet hemispherical sone levels.

# 182 BELT DRIVE

Motor HP	Fan RPM	Max BHP	Max Inlet/Outlet Sones	Tip Speed	CFM / Static Pressure (Inches WG)												
					0.125	0.250	0.500	0.750	1.000	1.250	1.500	1.750	2.000	2.250	2.500	2.750	3.000
Min Motor Frame 56					Max Motor Frame 184T					Max RPM 1759							
1/4	691	0.195	9.4 / 9.7	3301	2065	1840											
	744	0.238	10.7 / 11	3555	2259	2047	1253										
1/2	870	0.397	13.8 / 14.3	4157	2712	2526	2131										
	942	0.498	15.5 / 16.2	4501	2967	2794	2459	1854									
3/4	996	0.597	15.8 / 16.5	4759	3157	2993	2676	2247									
	1073	0.745	18 / 18.8	5127	3426	3272	2976	2644	1996								
1	1141	0.896	20 / 21	5452	3662	3517	3235	2955	2542								
	1181	0.998	21 / 22	5643	3801	3660	3386	3124	2769	2031							
1 1/2	1255	1.19	24 / 25	5996	4056	3923	3665	3415	3127	2723							
	1352	1.496	27 / 28	6460	4389	4266	4025	3789	3560	3259	2807						
2	1437	1.796	29 / 31	6866	4680	4564	4336	4112	3896	3651	3339	2814					
	1488	1.992	30 / 33	7109	4855	4743	4522	4305	4094	3882	3602	3240	2506				
3	1582	2.401	33 / 36	7559	5175	5070	4860	4656	4455	4259	4035	3772	3413	2699			
	1704	2.996	37 / 41	8141	5590	5492	5296	5106	4917	4733	4552	4337	4093	3770	3235		
5	1759	3.294	40 / 43	8404	5776	5682	5492	5307	5124	4944	4768	4586	4349	4084	3748	3092	

Performance certified is for installation type B: free inlet, ducted outlet. Power rating does not include transmission losses. Performance ratings do not include appurtenances. The sound ratings shown are loudness values in fan sones at 1.5 m (5 ft) in a hemispherical free field calculated per AMCA International Standard 301. Values are for installation type B: free inlet hemispherical sone levels.

# 200 BELT DRIVE

Motor HP	Fan RPM	Max BHP	Max Inlet/Outlet Sones	Tip Speed	CFM / Static Pressure (Inches WG)												
					0.125	0.250	0.500	0.750	1.000	1.250	1.500	1.750	2.000	2.250	2.500	2.750	3.000
Min Motor Frame 56					Max Motor Frame 184T					Max RPM 1480							
1/4	593	0.197	8.6 / 9	3105	2297	2000											
	639	0.243	10 / 10.3	3346	2521	2253											
1/2	747	0.398	13 / 13.4	3911	3037	2801	2240										
	805	0.496	14.7 / 15.2	4215	3309	3089	2627										
3/4	855	0.589	16.1 / 16.7	4477	3542	3334	2926	2171									
	921	0.747	17.9 / 18.6	4822	3848	3653	3277	2789									
1	979	0.894	19.7 / 20	5126	4114	3930	3573	3175	2396								
	1014	0.988	19.3 / 20	5309	4274	4096	3749	3386	2833								
1 1/2	1078	1.199	22 / 23	5644	4566	4397	4069	3753	3329	2444							
	1161	1.492	24 / 26	6079	4943	4786	4479	4182	3851	3391	2290						
2	1234	1.797	27 / 29	6461	5273	5125	4835	4553	4277	3915	3374						
	1278	1.991	29 / 30	6692	5471	5328	5048	4773	4507	4184	3761	2928					
3	1358	2.394	32 / 34	7110	5831	5697	5431	5171	4918	4663	4327	3892	3013				
	1463	2.994	35 / 38	7660	6302	6177	5929	5687	5448	5216	4962	4651	4247	3516			
5	1480	3.094	37 / 41	7749	6378	6255	6009	5770	5532	5303	5063	4755	4375	3748			

Performance certified is for installation type B: free inlet, ducted outlet. Power rating does not include transmission losses. Performance ratings do not include appurtenances. The sound ratings shown are loudness values in fan sones at 1.5 m (5 ft) in a hemispherical free field calculated per AMCA International Standard 301. Values are for installation type B: free inlet hemispherical sone levels.

# 222 BELT DRIVE

Motor HP	Fan RPM	Max BHP	Max Inlet/Outlet Sones	Tip Speed	CFM / Static Pressure (Inches WG)												
					0.125	0.250	0.500	0.750	1.000	1.250	1.500	1.750	2.000	2.250	2.500	2.750	3.000
Min Motor Frame 56					Max Motor Frame 184T					Max RPM 1458							
1/4	537	0.249	9.1 / 9.4	3128	2870	2508											
1/2	633	0.4	12.3 / 12.7	3687	3508	3202	2287										
	674	0.499	13.7 / 14.1	3926	3775	3484	2799										
3/4	717	0.599	15.1 / 15.6	4177	4054	3778	3195										
	776	0.75	17 / 17.6	4520	4432	4176	3682	2813									
1	820	0.897	18.4 / 19.1	4777	4712	4469	3999	3371									
	849	1	19.4 / 20	4945	4896	4660	4205	3667									
1 1/2	902	1.187	21 / 22	5254	5231	5007	4575	4113	3348								
	972	1.499	24 / 25	5662	5670	5461	5056	4667	4150	3084							
2	1033	1.789	24 / 25	6017	6052	5855	5472	5102	4678	4086							
	1070	1.996	26 / 27	6233	6282	6092	5722	5362	4984	4469	3481						
3	1137	2.386	29 / 30	6623	6699	6520	6170	5826	5494	5080	4532	3364					
	1225	2.992	33 / 35	7136	7244	7078	6750	6429	6117	5807	5392	4863	3813				
5	1301	3.595	37 / 39	7578	7713	7557	7246	6944	6646	6355	6026	5636	5109	4078			
	1348	3.989	39 / 41	7852	8003	7852	7551	7259	6968	6688	6408	6034	5597	4938	3682		
	1458	5	43 / 47	8493	8680	8540	8262	7989	7719	7454	7195	6935	6592	6225	5748	4891	

Performance certified is for installation type B: free inlet, ducted outlet. Power rating does not include transmission losses. Performance ratings do not include appurtenances. The sound ratings shown are loudness values in fan sones at 1.5 m (5 ft) in a hemispherical free field calculated per AMCA International Standard 301. Values are for installation type B: free inlet hemispherical sone levels.

# 245 BELT DRIVE

Motor HP	Fan RPM	Max BHP	Max Inlet/Outlet Sones	Tip Speed	CFM / Static Pressure (Inches WG)												
					0.125	0.250	0.500	0.750	1.000	1.250	1.500	1.750	2.000	2.250	2.500	2.750	3.000
Min Motor Frame 56					Max Motor Frame 213T					Max RPM 1388							
1/2	565	0.499	7.2 / 10.6	3624	4765	4293	2773										
3/4	602	0.6	8.2 / 12.1	3861	5136	4694	3557										
	645	0.75	9.7 / 13.7	4137	5564	5152	4221										
1	685	0.9	10.6 / 15.2	4394	5959	5570	4743	3221									
	709	0.998	11.4 / 16.1	4548	6194	5819	5044	3803									
1 1/2	754	1.195	12.5 / 17.8	4836	6633	6281	5574	4624									
	812	1.499	14.3 / 20	5208	7196	6869	6213	5467	4245								
2	863	1.799	15.8 / 22	5535	7687	7380	6763	6111	5222								
	894	2	16.8 / 23	5734	7985	7689	7093	6495	5696	4402							
3	950	2.4	18.6 / 26	6093	8522	8242	7682	7121	6471	5589							
	1023	2.996	21 / 30	6562	9218	8958	8439	7918	7385	6721	5779						
5	1126	3.996	25 / 35	7222	10196	9960	9488	9016	8542	8037	7442	6651	5446				
	1213	4.995	28 / 40	7780	11019	10800	10362	9924	9485	9045	8549	7990	7270	6244			
7 1/2	1289	5.994	31 / 45	8268	11736	11530	11118	10705	10293	9879	9465	8969	8426	7748	6835	5503	
	1388	7.485	35 / 52	8903	12667	12476	12094	11711	11328	10944	10560	10176	9713	9232	8617	7880	

Performance certified is for installation type B: free inlet, ducted outlet. Power rating does not include transmission losses. Performance ratings do not include appurtenances. The sound ratings shown are loudness values in fan sones at 1.5 m (5 ft) in a hemispherical free field calculated per AMCA International Standard 301. Values are for installation type B: free inlet hemispherical sone levels.

# 270 BELT DRIVE

Motor HP	Fan RPM	Max BHP	Max Inlet/Outlet Sones	Tip Speed	CFM / Static Pressure (Inches WG)												
					0.125	0.250	0.500	0.750	1.000	1.250	1.500	1.750	2.000	2.250	2.500	2.750	3.000
Min Motor Frame 56					Max Motor Frame 213T					Max RPM 1181							
1/2	444	0.398	6.3 / 8.6	3138	4847	4149											
	479	0.499	7.4 / 9.9	3386	5329	4715											
3/4	511	0.6	8.4 / 10.9	3612	5764	5189	3312										
	551	0.75	9.8 / 12.6	3895	6301	5769	4428										
1	583	0.899	11.1 / 13.9	4121	6727	6224	5080										
	603	0.998	11.9 / 14.8	4262	6992	6506	5445										
1 1/2	641	1.198	13.5 / 16.5	4531	7492	7035	6087	4556									
	692	1.499	15 / 18.7	4891	8158	7735	6886	5776									
2	734	1.799	16.2 / 20	5188	8703	8304	7504	6591	5063								
	760	1.997	17 / 22	5372	9039	8654	7882	7034	5784								
3	808	2.4	18.4 / 24	5711	9657	9295	8569	7835	6852	5237							
	870	2.996	21 / 27	6150	10451	10115	9441	8766	7994	6976	5186						
5	958	4	25 / 31	6772	11573	11268	10657	10044	9431	8687	7745	6263					
	1031	4.986	30 / 37	7288	12500	12216	11649	11080	10510	9915	9200	8288	6925				
7 1/2	1097	6.006	33 / 41	7754	13335	13069	12536	12001	11466	10931	10321	9631	8752	7461			
	1181	7.495	37 / 47	8348	14396	14148	13653	13157	12660	12163	11665	11083	10459	9645	8602	7144	

Performance certified is for installation type B: free inlet, ducted outlet. Power rating does not include transmission losses. Performance ratings do not include appurtenances. The sound ratings shown are loudness values in fan sones at 1.5 m (5 ft) in a hemispherical free field calculated per AMCA International Standard 301. Values are for installation type B: free inlet hemispherical sone levels.

# 300 BELT DRIVE

Motor HP	Fan RPM	Max BHP	Max Inlet/Outlet Sones	Tip Speed	CFM / Static Pressure (Inches WG)													
					0.125	0.250	0.500	0.750	1.000	1.250	1.500	1.750	2.000	2.250	2.500	2.750	3.000	
Min Motor Frame 56					Max Motor Frame 215T					Max RPM 1013								
1/2	401	0.499	7.2 / 8.6	3149	5811	5072												
3/4	427	0.599	8.2 / 9.7	3354	6291	5619												
	466	0.771	9.7 / 11.4	3660	7001	6368	4331											
1	488	0.897	10.6 / 12.5	3833	7397	6783	5218											
	505	0.998	11.4 / 12.9	3966	7701	7100	5681											
1 1/2	536	1.196	12.5 / 14.3	4210	8252	7677	6466											
	579	1.499	14.3 / 16.3	4547	9010	8470	7438	5664										
2	614	1.792	15.8 / 18.1	4822	9621	9106	8144	6836										
	636	2	16.8 / 19.2	4995	10004	9503	8567	7427										
3	676	2.394	18.6 / 21	5309	10697	10219	9327	8366	6844									
	728	2.997	21 / 24	5718	11592	11140	10296	9507	8405	6405								
5	802	3.999	25 / 28	6299	12859	12446	11669	10933	10144	9078	7244							
	863	4.986	28 / 32	6778	13897	13514	12782	12080	11414	10579	9523	7660						
7 1/2	917	5.996	31 / 35	7202	14813	14453	13755	13084	12451	11795	10936	9872	7907					
	988	7.5	35 / 40	7760	16014	15679	15020	14398	13790	13208	12552	11755	10765	9161				
10	1013	8.069	39 / 42	7956	16436	16109	15462	14855	14255	13688	13109	12331	11443	10225	8131			

Performance certified is for installation type B: free inlet, ducted outlet. Power rating does not include transmission losses. Performance ratings do not include appurtenances. The sound ratings shown are loudness values in fan sones at 1.5 m (5 ft) in a hemispherical free field calculated per AMCA International Standard 301. Values are for installation type B: free inlet hemispherical sone levels.

# 330 BELT DRIVE

Motor HP	Fan RPM	Max BHP	Max Inlet/Outlet Sones	Tip Speed	CFM / Static Pressure (Inches WG)													
					0.125	0.250	0.500	0.750	1.000	1.250	1.500	1.750	2.000	2.250	2.500	2.750	3.000	
Min Motor Frame 143T					Max Motor Frame 215T					Max RPM 957								
3/4	363	0.596	7.2 / 8.8	3136	6992	6091												
	392	0.745	8.4 / 10.1	3387	7705	6898												
1	423	0.929	9.8 / 11.7	3654	8456	7689	5198											
	434	1.001	10.3 / 12.3	3749	8720	7966	5826											
1 1/2	458	1.199	11.5 / 13.5	3957	9293	8564	6835											
	493	1.498	13.3 / 15	4259	10120	9430	7998											
2	524	1.791	14.7 / 16.6	4527	10846	10191	8931	6724										
	543	1.989	15.6 / 17.7	4691	11289	10652	9461	7720										
3	576	2.392	17 / 19.6	4976	12054	11447	10311	8909										
	621	2.987	19.3 / 22	5365	13091	12518	11447	10317	8629									
5	683	3.989	22 / 26	5901	14510	13977	12985	12052	10876	9036								
	736	4.984	26 / 29	6359	15716	15221	14289	13403	12480	11231	9226							
7 1/2	783	5.998	28 / 32	6765	16781	16316	15429	14578	13771	12753	11467	9165						
	843	7.495	32 / 37	7283	18135	17704	16867	16064	15303	14549	13520	12287	10196					
10	895	8.982	36 / 41	7732	19306	18899	18099	17343	16606	15900	15093	14125	12909	10872				
	928	9.986	38 / 44	8017	20047	19655	18876	18147	17423	16742	16061	15137	14100	12755	10423			

Performance certified is for installation type B: free inlet, ducted outlet. Power rating does not include transmission losses. Performance ratings do not include appurtenances. The sound ratings shown are loudness values in fan sones at 1.5 m (5 ft) in a hemispherical free field calculated per AMCA International Standard 301. Values are for installation type B: free inlet hemispherical sone levels.

# 365 BELT DRIVE

Motor HP	Fan RPM	Max BHP	Max Inlet/Outlet Sones	Tip Speed	CFM / Static Pressure (Inches WG)												
					0.125	0.250	0.500	0.750	1.000	1.250	1.500	1.750	2.000	2.250	2.500	2.750	3.000
Min Motor Frame 143T					Max Motor Frame 215T					Max RPM 757							
3/4	310	0.617	6.6 / 8.3	2962	7940	6705											
	331	0.748	7.5 / 9.2	3163	8648	7565											
1	351	0.887	8.4 / 10.2	3354	9314	8320											
	364	0.985	9 / 10.9	3478	9742	8773											
1 1/2	387	1.176	10.2 / 12.3	3698	10493	9563	6730										
	417	1.499	11.9 / 14.1	3985	11462	10574	8503										
2	443	1.8	13.3 / 15.8	4233	12294	11446	9672										
	459	1.997	14.3 / 16.7	4386	12802	11979	10329	6934									
3	487	2.374	16 / 18.6	4654	13687	12903	11436	9198									
	525	3.001	17.9 / 20	5017	14879	14141	12760	11101	7399								
5	578	3.982	21 / 24	5523	16529	15843	14561	13291	11454								
	622	4.984	23 / 27	5944	17890	17243	16036	14901	13493	11385							
7 1/2	661	5.972	26 / 29	6316	19090	18481	17334	16246	15089	13526	10888						
	712	7.463	29 / 33	6804	20654	20089	19008	17971	16989	15770	14229	11583					
10	757	8.989	32 / 37	7234	22029	21497	20468	19479	18545	17592	16326	14777	12005				

Performance certified is for installation type B: free inlet, ducted outlet. Power rating does not include transmission losses. Performance ratings do not include appurtenances. The sound ratings shown are loudness values in fan sones at 1.5 m (5 ft) in a hemispherical free field calculated per AMCA International Standard 301. Values are for installation type B: free inlet hemispherical sone levels.

# 402 BELT DRIVE

Motor HP	Fan RPM	Max BHP	Max Inlet/Outlet Sones	Tip Speed	CFM / Static Pressure (Inches WG)												
					0.125	0.250	0.500	0.750	1.000	1.250	1.500	1.750	2.000	2.250	2.500	2.750	3.000
Min Motor Frame 143T					Max Motor Frame 215T					Max RPM 683							
3/4	276	0.711	6.5 / 8.5	2908	9422	7866											
	281	0.75	6.7 / 8.7	2961	9650	8147											
1	299	0.899	7.5 / 9.5	3151	10465	9136											
	310	0.999	8.1 / 10.1	3267	10957	9726											
1 1/2	330	1.197	9.2 / 11.4	3477	11843	10664											
	356	1.491	10.7 / 13.1	3751	12980	11859	8684										
2	376	1.791	11.9 / 14.5	3962	13846	12762	10201										
	389	1.991	12.7 / 15.5	4099	14405	13345	11040										
3	414	2.39	14.4 / 17.2	4362	15473	14467	12438	8099									
	447	2.997	16.5 / 19.8	4710	16871	15926	14160	11605									
5	491	3.996	19.4 / 22	5174	18718	17841	16202	14349	11002								
	529	4.983	22 / 25	5574	20302	19473	17925	16424	14247								
7 1/2	562	5.997	24 / 27	5922	21670	20880	19408	18025	16293	13643							
	605	7.475	27 / 31	6375	23444	22711	21326	20011	18650	16809	13890						
10	643	8.966	29 / 34	6776	25006	24316	22998	21734	20535	19030	17128	13761					
	666	9.977	31 / 36	7018	25949	25283	24002	22764	21607	20288	18624	16244					

Performance certified is for installation type B: free inlet, ducted outlet. Power rating does not include transmission losses. Performance ratings do not include appurtenances. The sound ratings shown are loudness values in fan sones at 1.5 m (5 ft) in a hemispherical free field calculated per AMCA International Standard 301. Values are for installation type B: free inlet hemispherical sone levels.

# 135-08 BELT DRIVE

Motor HP	Fan RPM	Max BHP	Max Inlet/Outlet Sones	Tip Speed	CFM / Static Pressure (Inches WG)												
					0.125	0.250	0.500	0.750	1.000	1.250	1.500	1.750	2.000	2.250	2.500	2.750	3.000
Min Motor Frame 56					Max Motor Frame 145T					Max RPM 2393							
1/4	1360	0.247	18.1 / 13.1	4807	1333	1242	1052	810									
1/2	1714	0.5	26 / 19.7	6058	1722	1651	1505	1353	1183	943							
3/4	1962	0.749	31 / 25	6934	1991	1928	1802	1673	1540	1392	1217	938					
1	2159	0.998	36 / 28	7631	2203	2146	2031	1916	1798	1675	1540	1385	1170	854			
1 1/2	2393	1.361	42 / 33	8458	2453	2402	2299	2195	2090	1984	1872	1755	1625	1472	1255	965	

Performance certified is for installation type B: free inlet, ducted outlet. Power rating does not include transmission losses. Performance ratings do not include appurtenances. The sound ratings shown are loudness values in fan sones at 1.5 m (5 ft) in a hemispherical free field calculated per AMCA International Standard 301. Values are for installation type B: free inlet hemispherical sone levels.

# 150-08 BELT DRIVE

Motor HP	Fan RPM	Max BHP	Max Inlet/Outlet Sones	Tip Speed	CFM / Static Pressure (Inches WG)												
					0.125	0.250	0.500	0.750	1.000	1.250	1.500	1.750	2.000	2.250	2.500	2.750	3.000
Min Motor Frame 56					Max Motor Frame 145T					Max RPM 2154							
1/4	1141	0.249	16.9 / 12	4481	1519	1397	1137	700									
1/2	1438	0.498	24 / 17.7	5647	1970	1874	1680	1475	1217	735							
3/4	1646	0.748	29 / 22	6464	2280	2198	2029	1858	1675	1454	1116						
1	1812	0.998	34 / 26	7116	2526	2451	2299	2144	1985	1814	1614	1331					
1 1/2	2074	1.498	42 / 32	8145	2912	2846	2714	2580	2445	2307	2163	2002	1820	1576	1234		
2	2154	1.68	44 / 34	8459	3029	2966	2839	2710	2581	2450	2312	2167	2007	1818	1551	1193	

Performance certified is for installation type B: free inlet, ducted outlet. Power rating does not include transmission losses. Performance ratings do not include appurtenances. The sound ratings shown are loudness values in fan sones at 1.5 m (5 ft) in a hemispherical free field calculated per AMCA International Standard 301. Values are for installation type B: free inlet hemispherical sone levels.

# 165-08 BELT DRIVE

Motor HP	Fan RPM	Max BHP	Max Inlet/Outlet Sones	Tip Speed	CFM / Static Pressure (Inches WG)												
					0.125	0.250	0.500	0.750	1.000	1.250	1.500	1.750	2.000	2.250	2.500	2.750	3.000
Min Motor Frame 56					Max Motor Frame 184T					Max RPM 2000							
1/4	974	0.25	15.9 / 11.4	4207	1707	1550	1200										
1/2	1227	0.5	23 / 16.2	5300	2222	2099	1848	1566	1129								
3/4	1404	0.749	28 / 20	6065	2576	2469	2251	2025	1772	1415							
1	1546	1.001	32 / 24	6678	2857	2760	2564	2364	2153	1914	1587	1040					
1 1/2	1769	1.497	39 / 30	7642	3296	3211	3040	2867	2692	2508	2308	2077	1759	1292			
2	1947	1.999	46 / 35	8410	3644	3567	3412	3255	3097	2938	2770	2592	2397	2163	1821	1373	
3	2000	2.165	48 / 37	8639	3747	3672	3522	3369	3216	3061	2900	2735	2546	2336	2067	1694	

Performance certified is for installation type B: free inlet, ducted outlet. Power rating does not include transmission losses. Performance ratings do not include appurtenances. The sound ratings shown are loudness values in fan sones at 1.5 m (5 ft) in a hemispherical free field calculated per AMCA International Standard 301. Values are for installation type B: free inlet hemispherical sone levels.

# 182-08 BELT DRIVE

Motor HP	Fan RPM	Max BHP	Max Inlet/Outlet Sones	Tip Speed	CFM / Static Pressure (Inches WG)												
					0.125	0.250	0.500	0.750	1.000	1.250	1.500	1.750	2.000	2.250	2.500	2.750	3.000
Min Motor Frame 56					Max Motor Frame 184T					Max RPM 1770							
1/4	792	0.248	11.9 / 12.2	3784	2119	1940	1455										
1/2	998	0.499	15.8 / 16.5	4768	2754	2612	2326	1927									
3/4	1142	0.748	20 / 21	5456	3189	3065	2817	2553	2175								
1	1257	0.996	24 / 25	6006	3534	3422	3196	2969	2696	2331							
1 1/2	1439	1.499	29 / 31	6875	4076	3978	3781	3584	3385	3152	2858	2445					
2	1583	1.997	33 / 36	7563	4503	4414	4235	4056	3876	3695	3480	3222	2903	2333			
3	1770	2.789	39 / 43	8457	5055	4975	4815	4655	4495	4334	4172	4002	3781	3536	3247	2778	

Performance certified is for installation type B: free inlet, ducted outlet. Power rating does not include transmission losses. Performance ratings do not include appurtenances. The sound ratings shown are loudness values in fan sones at 1.5 m (5 ft) in a hemispherical free field calculated per AMCA International Standard 301. Values are for installation type B: free inlet hemispherical sone levels.

# 200-08 BELT DRIVE

Motor HP	Fan RPM	Max BHP	Max Inlet/Outlet Sones	Tip Speed	CFM / Static Pressure (Inches WG)												
					0.125	0.250	0.500	0.750	1.000	1.250	1.500	1.750	2.000	2.250	2.500	2.750	3.000
Min Motor Frame 56					Max Motor Frame 184T					Max RPM 1615							
1/4	680	0.241	11.2 / 11.5	3560	2369	2139	1308										
1/2	856	0.494	16.1 / 16.7	4482	3087	2906	2530	1891									
3/4	980	0.747	19.7 / 20	5131	3584	3425	3107	2731	2090								
1	1079	0.999	22 / 23	5650	3976	3833	3544	3254	2845	2119							
1 1/2	1235	1.5	27 / 29	6466	4590	4465	4213	3960	3707	3358	2884						
2	1359	1.998	32 / 34	7116	5075	4961	4733	4503	4273	4030	3715	3328	2604				
3	1556	2.999	39 / 42	8147	5842	5742	5543	5343	5143	4942	4740	4492	4210	3873	3389		
5	1615	3.349	41 / 45	8456	6071	5975	5783	5590	5397	5204	5010	4806	4540	4246	3899	3334	

Performance certified is for installation type B: free inlet, ducted outlet. Power rating does not include transmission losses. Performance ratings do not include appurtenances. The sound ratings shown are loudness values in fan sones at 1.5 m (5 ft) in a hemispherical free field calculated per AMCA International Standard 301. Values are for installation type B: free inlet hemispherical sone levels.

# 222-08 BELT DRIVE

Motor HP	Fan RPM	Max BHP	Max Inlet/Outlet Sones	Tip Speed	CFM / Static Pressure (Inches WG)												
					0.125	0.250	0.500	0.750	1.000	1.250	1.500	1.750	2.000	2.250	2.500	2.750	3.000
Min Motor Frame 56					Max Motor Frame 184T					Max RPM 1458							
1/4	569	0.245	10.1 / 10.5	3314	2689	2383											
1/2	717	0.499	15.1 / 15.6	4177	3529	3288	2743										
3/4	821	0.749	18.5 / 19.1	4782	4106	3896	3473	2886									
1	903	0.994	21 / 22	5260	4557	4365	3981	3546	2874								
1 1/2	1034	1.494	24 / 25	6023	5269	5103	4768	4432	4030	3498							
2	1138	1.994	29 / 30	6629	5831	5680	5376	5071	4765	4370	3879	2899					
3	1303	3	37 / 39	7590	6718	6586	6321	6055	5789	5521	5207	4829	4369	3551			
5	1458	4.2	43 / 47	8493	7547	7429	7192	6955	6718	6479	6240	5994	5667	5309	4899	4240	

Performance certified is for installation type B: free inlet, ducted outlet. Power rating does not include transmission losses. Performance ratings do not include appurtenances. The sound ratings shown are loudness values in fan sones at 1.5 m (5 ft) in a hemispherical free field calculated per AMCA International Standard 301. Values are for installation type B: free inlet hemispherical sone levels.

# 245-08 BELT DRIVE

Motor HP	Fan RPM	Max BHP	Max Inlet/Outlet Sones	Tip Speed	CFM / Static Pressure (Inches WG)												
					0.125	0.250	0.500	0.750	1.000	1.250	1.500	1.750	2.000	2.250	2.500	2.750	3.000
Min Motor Frame 56					Max Motor Frame 213T					Max RPM 1394							
1/2	618	0.495	10.2 / 12.6	3964	4316	3936	2956										
3/4	707	0.749	12.6 / 16	4535	5034	4710	3984	2764									
1	778	0.993	14.5 / 18.8	4990	5600	5308	4695	3891									
1 1/2	891	1.499	18.1 / 23	5715	6491	6241	5718	5141	4405	2988							
2	980	1.997	21 / 27	6286	7187	6960	6491	6001	5426	4715	3388						
3	1122	2.995	28 / 35	7197	8290	8092	7688	7276	6841	6343	5761	5023					
5	1330	4.988	37 / 48	8531	9895	9728	9393	9047	8699	8337	7970	7530	7057	6529	5838	4675	
7 1/2	1394	5.746	40 / 52	8941	10387	10227	9908	9581	9249	8910	8560	8192	7758	7290	6786	6109	

Performance certified is for installation type B: free inlet, ducted outlet. Power rating does not include transmission losses. Performance ratings do not include appurtenances. The sound ratings shown are loudness values in fan sones at 1.5 m (5 ft) in a hemispherical free field calculated per AMCA International Standard 301. Values are for installation type B: free inlet hemispherical sone levels.

# 270-08 BELT DRIVE

Motor HP	Fan RPM	Max BHP	Max Inlet/Outlet Sones	Tip Speed	CFM / Static Pressure (Inches WG)												
					0.125	0.250	0.500	0.750	1.000	1.250	1.500	1.750	2.000	2.250	2.500	2.750	3.000
Min Motor Frame 56					Max Motor Frame 213T					Max RPM 1240							
1/2	525	0.491	8.9 / 11.5	3711	4849	4349	2775										
3/4	601	0.748	11.8 / 14.7	4248	5678	5255	4247										
1	662	0.999	14 / 17.3	4679	6333	5952	5123	3903									
2	834	1.997	19.3 / 25	5895	8151	7857	7246	6594	5756	4501							
3	954	2.991	24 / 31	6743	9403	9146	8619	8074	7491	6774	5876	4192					
5	1132	4.999	35 / 43	8002	11246	11030	10595	10144	9686	9211	8672	8065	7381	6414			
7 1/2	1240	6.578	40 / 52	8765	12358	12161	11766	11359	10947	10524	10090	9606	9069	8460	7752	6762	

Performance certified is for installation type B: free inlet, ducted outlet. Power rating does not include transmission losses. Performance ratings do not include appurtenances. The sound ratings shown are loudness values in fan sones at 1.5 m (5 ft) in a hemispherical free field calculated per AMCA International Standard 301. Values are for installation type B: free inlet hemispherical sone levels.

# 300-08 BELT DRIVE

Motor HP	Fan RPM	Max BHP	Max Inlet/Outlet Sones	Tip Speed	CFM / Static Pressure (Inches WG)												
					0.125	0.250	0.500	0.750	1.000	1.250	1.500	1.750	2.000	2.250	2.500	2.750	3.000
Min Motor Frame 56					Max Motor Frame 215T					Max RPM 1028							
1/2	429	0.496	8.2 / 9.8	3369	5391	4767											
3/4	491	0.747	10.8 / 12.3	3856	6335	5795	4426										
1	540	0.998	12.7 / 14.5	4241	7069	6580	5491										
1 1/2	618	1.493	16 / 18.3	4854	8221	7795	6933	5797									
2	680	1.99	18.8 / 21	5341	9127	8741	7961	7088	5847								
3	779	2.993	23 / 27	6118	10561	10225	9547	8862	8064	7059	4786						
5	923	4.99	31 / 36	7249	12628	12344	11775	11201	10623	10014	9268	8381	6909				
7 1/2	1028	6.882	38 / 43	8074	14126	13871	13361	12847	12332	11811	11289	10619	9885	9006	7537		

Performance certified is for installation type B: free inlet, ducted outlet. Power rating does not include transmission losses. Performance ratings do not include appurtenances. The sound ratings shown are loudness values in fan sones at 1.5 m (5 ft) in a hemispherical free field calculated per AMCA International Standard 301. Values are for installation type B: free inlet hemispherical sone levels.



# 330-08 BELT DRIVE

Motor HP	Fan RPM	Max BHP	Max Inlet/Outlet Sones	Tip Speed	CFM / Static Pressure (Inches WG)												
					0.125	0.250	0.500	0.750	1.000	1.250	1.500	1.750	2.000	2.250	2.500	2.750	3.000
Min Motor Frame 143T					Max Motor Frame 215T					Max RPM 957							
3/4	419	0.737	9.6 / 11.5	3620	7114	6415	4146										
1	461	0.999	11.7 / 13.7	3983	7959	7327	5795										
1 1/2	527	1.488	14.9 / 16.7	4553	9266	8715	7571	5797									
2	581	2.003	17.3 / 19.8	5019	10322	9824	8816	7580	4984								
3	665	3.002	22 / 25	5745	11948	11515	10640	9754	8580	6713							
5	788	4.991	29 / 33	6808	14306	13941	13205	12466	11717	10812	9724	8016					
7 1/2	902	7.502	36 / 41	7793	16475	16156	15516	14871	14224	13570	12839	11999	10992	9610			
10	957	8.956	40 / 46	8268	17517	17216	16614	16007	15399	14785	14168	13427	12618	11667	10378	7668	

Performance certified is for installation type B: free inlet, ducted outlet. Power rating does not include transmission losses. Performance ratings do not include appurtenances. The sound ratings shown are loudness values in fan sones at 1.5 m (5 ft) in a hemispherical free field calculated per AMCA International Standard 301. Values are for installation type B: free inlet hemispherical sone levels.

# 365-08 BELT DRIVE

Motor HP	Fan RPM	Max BHP	Max Inlet/Outlet Sones	Tip Speed	CFM / Static Pressure (Inches WG)												
					0.125	0.250	0.500	0.750	1.000	1.250	1.500	1.750	2.000	2.250	2.500	2.750	3.000
Min Motor Frame 143T					Max Motor Frame 215T					Max RPM 839							
3/4	354	0.743	8.6 / 10.4	3383	8019	7100											
1	389	0.973	10.3 / 12.4	3717	8981	8150	5789										
1 1/2	446	1.499	13.5 / 16	4262	10522	9801	8204										
2	491	1.987	16.2 / 18.2	4692	11721	11068	9746	7865									
3	562	2.993	19.8 / 23	5370	13592	13024	11875	10600	8820								
5	666	4.988	26 / 30	6364	16301	15822	14858	13885	12830	11489	9607						
7 1/2	762	7.482	33 / 37	7281	18779	18361	17522	16677	15825	14939	13838	12544	10516				
10	839	9.975	39 / 45	8017	20758	20378	19619	18851	18084	17307	16510	15511	14395	13017	10646		

Performance certified is for installation type B: free inlet, ducted outlet. Power rating does not include transmission losses. Performance ratings do not include appurtenances. The sound ratings shown are loudness values in fan sones at 1.5 m (5 ft) in a hemispherical free field calculated per AMCA International Standard 301. Values are for installation type B: free inlet hemispherical sone levels.

# 402-08 BELT DRIVE

Motor HP	Fan RPM	Max BHP	Max Inlet/Outlet Sones	Tip Speed	CFM / Static Pressure (Inches WG)												
					0.125	0.250	0.500	0.750	1.000	1.250	1.500	1.750	2.000	2.250	2.500	2.750	3.000
Min Motor Frame 143T					Max Motor Frame 215T					Max RPM 713							
3/4	301	0.749	7.6 / 9.6	3172	9002	7756											
1	331	0.986	9.2 / 11.4	3488	10121	9039											
1 1/2	379	1.498	12.1 / 14.7	3994	11877	10940	8676										
2	417	1.994	14.6 / 17.4	4394	13245	12396	10566	7123									
3	477	2.992	18.5 / 22	5026	15378	14639	13142	11311	7523								
5	566	4.999	24 / 28	5964	18501	17880	16628	15360	13825	11721							
7 1/2	648	7.49	30 / 34	6828	21350	20808	19717	18620	17510	16175	14572	12147					
10	713	9.978	35 / 40	7513	23595	23103	22115	21119	20117	19108	17867	16445	14616	10868			

Performance certified is for installation type B: free inlet, ducted outlet. Power rating does not include transmission losses. Performance ratings do not include appurtenances. The sound ratings shown are loudness values in fan sones at 1.5 m (5 ft) in a hemispherical free field calculated per AMCA International Standard 301. Values are for installation type B: free inlet hemispherical sone levels.

# 135-05 BELT DRIVE

Motor HP	Fan RPM	Max BHP	Max Inlet/Outlet Sones	Tip Speed	CFM / Static Pressure (Inches WG)												
					0.125	0.250	0.500	0.750	1.000	1.250	1.500	1.750	2.000	2.250	2.500	2.750	3.000
Min Motor Frame 56					Max Motor Frame 145T					Max RPM 2395							
1/4	1509	0.25	11.2 / 11.9	5333	1176	1110	974	814	620								
1/2	1901	0.5	16.3 / 17.5	6719	1512	1460	1355	1246	1127	993	839	629					
3/4	2176	0.75	20 / 21	7691	1745	1699	1608	1515	1419	1315	1202	1078	940	765			
1	2395	1	23 / 25	8465	1929	1888	1805	1721	1636	1549	1453	1352	1243	1126	994	819	

Performance certified is for installation type B: free inlet, ducted outlet. Power rating does not include transmission losses. Performance ratings do not include appurtenances. The sound ratings shown are loudness values in fan sones at 1.5 m (5 ft) in a hemispherical free field calculated per AMCA International Standard 301. Values are for installation type B: free inlet hemispherical sone levels.

# 150-05 BELT DRIVE

Motor HP	Fan RPM	Max BHP	Max Inlet/Outlet Sones	Tip Speed	CFM / Static Pressure (Inches WG)												
					0.125	0.250	0.500	0.750	1.000	1.250	1.500	1.750	2.000	2.250	2.500	2.750	3.000
Min Motor Frame 56					Max Motor Frame 145T					Max RPM 2154							
1/4	1266	0.25	10.2 / 10.7	4972	1342	1254	1068	842									
1/2	1595	0.5	15 / 16	6264	1731	1662	1522	1373	1205	1013	757						
3/4	1825	0.75	19 / 20	7167	2000	1939	1818	1693	1561	1416	1254	1071	816				
1	2009	1	22 / 23	7889	2213	2158	2048	1937	1822	1699	1567	1423	1264	1076			
1 1/2	2154	1.233	24 / 26	8459	2380	2329	2226	2123	2017	1910	1791	1666	1532	1387	1224	1005	

Performance certified is for installation type B: free inlet, ducted outlet. Power rating does not include transmission losses. Performance ratings do not include appurtenances. The sound ratings shown are loudness values in fan sones at 1.5 m (5 ft) in a hemispherical free field calculated per AMCA International Standard 301. Values are for installation type B: free inlet hemispherical sone levels.

# 165-05 BELT DRIVE

Motor HP	Fan RPM	Max BHP	Max Inlet/Outlet Sones	Tip Speed	CFM / Static Pressure (Inches WG)												
					0.125	0.250	0.500	0.750	1.000	1.250	1.500	1.750	2.000	2.250	2.500	2.750	3.000
Min Motor Frame 56					Max Motor Frame 184T					Max RPM 2000							
1/4	1080	0.248	9.5 / 10	4665	1510	1397	1149	832									
1/2	1360	0.5	13.9 / 14.6	5875	1954	1865	1682	1484	1252	966							
3/4	1557	0.75	17.3 / 18.4	6726	2261	2184	2026	1864	1686	1487	1258	947					
1	1714	1	20 / 22	7404	2504	2434	2291	2146	1996	1831	1649	1446	1200				
1 1/2	1962	1.5	25 / 27	8475	2886	2824	2700	2575	2448	2318	2175	2024	1863	1688	1492	1234	
2	2000	2	25 / 27	8639	2944	2884	2762	2640	2515	2388	2251	2106	1951	1781	1596	1374	

Performance certified is for installation type B: free inlet, ducted outlet. Power rating does not include transmission losses. Performance ratings do not include appurtenances. The sound ratings shown are loudness values in fan sones at 1.5 m (5 ft) in a hemispherical free field calculated per AMCA International Standard 301. Values are for installation type B: free inlet hemispherical sone levels.

# 182-05 BELT DRIVE

Motor HP	Fan RPM	Max BHP	Max Inlet/Outlet Sones	Tip Speed	CFM / Static Pressure (Inches WG)												
					0.125	0.250	0.500	0.750	1.000	1.250	1.500	1.750	2.000	2.250	2.500	2.750	3.000
Min Motor Frame 56					Max Motor Frame 184T					Max RPM 1770							
1/4	890	0.249	10.8 / 9.5	4252	1882	1756	1458										
1/2	1121	0.496	13 / 13.8	5356	2425	2332	2124	1883	1551								
3/4	1284	0.749	16.2 / 17	6135	2803	2722	2548	2358	2142	1870	1368						
1	1413	0.998	18.8 / 19.7	6751	3100	3026	2872	2709	2529	2324	2073	1665					
1 1/2	1617	1.499	24 / 25	7726	3568	3503	3374	3233	3088	2932	2761	2571	2339	1988			
2	1770	1.963	29 / 30	8457	3917	3858	3740	3616	3486	3351	3208	3054	2885	2685	2440	2078	

Performance certified is for installation type B: free inlet, ducted outlet. Power rating does not include transmission losses. Performance ratings do not include appurtenances. The sound ratings shown are loudness values in fan sones at 1.5 m (5 ft) in a hemispherical free field calculated per AMCA International Standard 301. Values are for installation type B: free inlet hemispherical sone levels.

# 200-05 BELT DRIVE

Motor HP	Fan RPM	Max BHP	Max Inlet/Outlet Sones	Tip Speed	CFM / Static Pressure (Inches WG)												
					0.125	0.250	0.500	0.750	1.000	1.250	1.500	1.750	2.000	2.250	2.500	2.750	3.000
Min Motor Frame 56					Max Motor Frame 184T					Max RPM 1615							
1/4	764	0.25	10.9 / 9	4000	2109	1946	1533										
1/2	963	0.5	12.8 / 13.2	5042	2728	2606	2335	2008	1405								
3/4	1102	0.75	15.2 / 16	5770	3154	3051	2825	2577	2271	1799							
1	1213	0.999	17.6 / 18.5	6351	3492	3398	3197	2981	2741	2447	2022						
1 1/2	1388	1.497	22 / 23	7268	4021	3939	3771	3590	3397	3192	2956	2666	2223				
2	1528	1.997	26 / 27	8001	4443	4368	4218	4056	3892	3712	3527	3312	3065	2754	2272		
3	1615	2.357	29 / 30	8456	4704	4633	4492	4342	4186	4024	3852	3668	3464	3224	2930	2495	

Performance certified is for installation type B: free inlet, ducted outlet. Power rating does not include transmission losses. Performance ratings do not include appurtenances. The sound ratings shown are loudness values in fan sones at 1.5 m (5 ft) in a hemispherical free field calculated per AMCA International Standard 301. Values are for installation type B: free inlet hemispherical sone levels.

# 222-05 BELT DRIVE

Motor HP	Fan RPM	Max BHP	Max Inlet/Outlet Sones	Tip Speed	CFM / Static Pressure (Inches WG)												
					0.125	0.250	0.500	0.750	1.000	1.250	1.500	1.750	2.000	2.250	2.500	2.750	3.000
Min Motor Frame 56					Max Motor Frame 184T					Max RPM 1458							
1/4	640	0.246	11.5 / 9.8	3728	2407	2182	1543										
1/2	806	0.497	12.5 / 11.7	4695	3123	2958	2590	2079									
3/4	923	0.746	14.3 / 15.2	5377	3620	3481	3174	2819	2335								
1	1015	0.998	16.4 / 17.3	5912	4007	3881	3610	3313	2966	2465							
1 1/2	1162	1.495	20 / 21	6769	4621	4511	4283	4041	3775	3472	3102	2511					
2	1279	1.995	23 / 25	7450	5107	5008	4807	4588	4359	4118	3838	3510	3076	2341			
3	1458	2.956	29 / 30	8493	5848	5761	5586	5402	5210	5011	4800	4574	4324	4032	3680	3165	

Performance certified is for installation type B: free inlet, ducted outlet. Power rating does not include transmission losses. Performance ratings do not include appurtenances. The sound ratings shown are loudness values in fan sones at 1.5 m (5 ft) in a hemispherical free field calculated per AMCA International Standard 301. Values are for installation type B: free inlet hemispherical sone levels.

# 245-05 BELT DRIVE

Motor HP	Fan RPM	Max BHP	Max Inlet/Outlet Sones	Tip Speed	CFM / Static Pressure (Inches WG)												
					0.125	0.250	0.500	0.750	1.000	1.250	1.500	1.750	2.000	2.250	2.500	2.750	3.000
Min Motor Frame 56					Max Motor Frame 213T					Max RPM 1394							
1/2	695	0.5	9.8 / 17.6	4458	3580	3351	2814	1950									
3/4	796	0.749	12.3 / 25	5106	4161	3964	3547	2987	2164								
1	876	1.001	14.3 / 25	5619	4616	4441	4070	3643	3065	2189							
1 1/2	1002	1.497	18 / 27	6427	5327	5174	4856	4523	4132	3631	3005						
2	1103	1.997	21 / 29	7075	5893	5754	5470	5177	4865	4482	4025	3493	2684				
3	1263	3	26 / 30	8101	6785	6664	6422	6167	5911	5637	5341	4966	4553	4087	3484		
5	1394	4.031	31 / 34	8941	7513	7403	7184	6958	6726	6492	6245	5997	5660	5307	4929	4495	3952

Performance certified is for installation type B: free inlet, ducted outlet. Power rating does not include transmission losses. Performance ratings do not include appurtenances. The sound ratings shown are loudness values in fan sones at 1.5 m (5 ft) in a hemispherical free field calculated per AMCA International Standard 301. Values are for installation type B: free inlet hemispherical sone levels.

# 270-05 BELT DRIVE

Motor HP	Fan RPM	Max BHP	Max Inlet/Outlet Sones	Tip Speed	CFM / Static Pressure (Inches WG)												
					0.125	0.250	0.500	0.750	1.000	1.250	1.500	1.750	2.000	2.250	2.500	2.750	3.000
Min Motor Frame 56					Max Motor Frame 213T					Max RPM 1181							
1/2	591	0.498	8.8 / 14.8	4178	4040	3741	2976										
3/4	677	0.75	11.3 / 19	4785	4706	4449	3901	3072									
1	745	1	13.3 / 26	5266	5226	4996	4508	3891	3025								
1 1/2	853	1.5	16.6 / 27	6030	6045	5848	5433	4993	4409	3683							
2	938	1.998	19.2 / 29	6630	6685	6506	6134	5745	5320	4748	4083	3089					
3	1074	2.996	24 / 31	7592	7704	7547	7229	6898	6555	6201	5723	5196	4591	3734			
5	1181	3.985	28 / 32	8348	8501	8358	8072	7774	7473	7155	6833	6407	5941	5433	4835	3987	

Performance certified is for installation type B: free inlet, ducted outlet. Power rating does not include transmission losses. Performance ratings do not include appurtenances. The sound ratings shown are loudness values in fan sones at 1.5 m (5 ft) in a hemispherical free field calculated per AMCA International Standard 301. Values are for installation type B: free inlet hemispherical sone levels.

# 300-05 BELT DRIVE

Motor HP	Fan RPM	Max BHP	Max Inlet/Outlet Sones	Tip Speed	CFM / Static Pressure (Inches WG)												
					0.125	0.250	0.500	0.750	1.000	1.250	1.500	1.750	2.000	2.250	2.500	2.750	3.000
Min Motor Frame 56					Max Motor Frame 215T					Max RPM 1013							
1/2	491	0.5	7.7 / 8.6	3856	4631	4222	3149										
3/4	562	0.745	9.6 / 10.9	4414	5398	5059	4250	2884									
1	618	0.997	11.2 / 12.8	4854	5995	5697	5004	4148									
1 1/2	708	1.5	14.2 / 16.1	5561	6945	6698	6140	5476	4699								
2	779	1.997	16.8 / 18.9	6118	7688	7464	6973	6413	5790	5033	3476						
3	892	2.996	21.3 / 24	7006	8865	8669	8259	7817	7309	6767	6155	5339					
5	1013	4.39	25.7 / 29	7956	10117	9945	9599	9216	8826	8373	7905	7414	6835	6086	4774		

Performance certified is for installation type B: free inlet, ducted outlet. Power rating does not include transmission losses. Performance ratings do not include appurtenances. The sound ratings shown are loudness values in fan sones at 1.5 m (5 ft) in a hemispherical free field calculated per AMCA International Standard 301. Values are for installation type B: free inlet hemispherical sone levels.

# 330-05 BELT DRIVE

Motor HP	Fan RPM	Max BHP	Max Inlet/Outlet Sones	Tip Speed	CFM / Static Pressure (Inches WG)												
					0.125	0.250	0.500	0.750	1.000	1.250	1.500	1.750	2.000	2.250	2.500	2.750	3.000
Min Motor Frame 143T					Max Motor Frame 215T					Max RPM 957							
3/4	479	0.746	8.9 / 10.1	4138	6075	5630	4528										
1	528	0.996	10.5 / 11.8	4562	6774	6382	5455	4149									
1 1/2	604	1.494	13.1 / 14.8	5218	7848	7523	6772	5894	4609								
2	665	1.999	15.3 / 17.5	5745	8702	8412	7768	7013	6142	4730							
3	761	2.993	19.4 / 22	6575	10036	9783	9243	8648	7974	7236	6265						
5	902	4.996	26 / 29	7793	11982	11768	11342	10864	10371	9809	9221	8594	7862	6750			
7 1/2	957	5.966	28 / 32	8268	12737	12537	12135	11697	11244	10740	10210	9642	9035	8345	7369	5596	

Performance certified is for installation type B: free inlet, ducted outlet. Power rating does not include transmission losses. Performance ratings do not include appurtenances. The sound ratings shown are loudness values in fan sones at 1.5 m (5 ft) in a hemispherical free field calculated per AMCA International Standard 301. Values are for installation type B: free inlet hemispherical sone levels.

# 365-05 BELT DRIVE

Motor HP	Fan RPM	Max BHP	Max Inlet/Outlet Sones	Tip Speed	CFM / Static Pressure (Inches WG)												
					0.125	0.250	0.500	0.750	1.000	1.250	1.500	1.750	2.000	2.250	2.500	2.750	3.000
Min Motor Frame 143T					Max Motor Frame 215T					Max RPM 833							
3/4	405	0.748	8 / 9.3	3870	6884	6282	4714										
1	446	0.996	9.6 / 11	4262	7682	7158	5890										
1 1/2	510	1.494	12.2 / 13.7	4873	8913	8475	7456	6200									
2	562	1.993	14.3 / 16	5370	9903	9522	8644	7611	6267								
3	643	2.996	17.6 / 20	6144	11432	11102	10378	9556	8640	7551	5338						
5	763	5.005	23 / 26	7291	13679	13401	12829	12199	11505	10754	9959	9002	7459				
7 1/2	833	6.508	27 / 30	7960	14983	14728	14218	13650	13074	12404	11711	10984	10129	9024	7095		

Performance certified is for installation type B: free inlet, ducted outlet. Power rating does not include transmission losses. Performance ratings do not include appurtenances. The sound ratings shown are loudness values in fan sones at 1.5 m (5 ft) in a hemispherical free field calculated per AMCA International Standard 301. Values are for installation type B: free inlet hemispherical sone levels.

# 402-05 BELT DRIVE

Motor HP	Fan RPM	Max BHP	Max Inlet/Outlet Sones	Tip Speed	CFM / Static Pressure (Inches WG)												
					0.125	0.250	0.500	0.750	1.000	1.250	1.500	1.750	2.000	2.250	2.500	2.750	3.000
Min Motor Frame 143T					Max Motor Frame 215T					Max RPM 683							
3/4	347	0.747	7.3 / 8.7	3656	7837	7027	4613										
1	379	0.999	8.6 / 10.1	3994	8679	7986	6209										
1 1/2	434	1.493	11.2 / 12.8	4573	10106	9525	8152	6228									
2	477	1.99	13.2 / 15	5026	11210	10700	9516	8098	5385								
3	547	3.002	16.5 / 18.6	5764	12990	12561	11607	10491	9206	7171							
5	648	4.998	21 / 24	6828	15534	15173	14409	13587	12633	11614	10426	8543					
7 1/2	742	7.506	27 / 30	7819	17886	17570	16938	16230	15503	14669	13799	12879	11794	10226			
10	755	7.902	28 / 31	7956	18211	17900	17279	16589	15887	15071	14228	13344	12302	10954	8590		

Performance certified is for installation type B: free inlet, ducted outlet. Power rating does not include transmission losses. Performance ratings do not include appurtenances. The sound ratings shown are loudness values in fan sones at 1.5 m (5 ft) in a hemispherical free field calculated per AMCA International Standard 301. Values are for installation type B: free inlet hemispherical sone levels.

# PENNBARRY PRODUCT SOLUTIONS

---



## Commercial

- Roof & wall exhaust centrifugal fans
- Ceiling, wall, & inline centrifugal fans
- Roof supply centrifugal fans
- Square & round centrifugal fans
- Wall mounted axial fans
- Hooded roof axial fans
- Upblast roof axial fans
- Gravity ventilators
- Roof curbs



## Industrial

- Freestanding centrifugal fans
- Industrial & material handling fans
- Tubular centrifugal inline fans
- Mixed flow centrifugal fans
- Plug & plenum fans
- Wall mounted propeller fans
- Tube axial fans
- Vane axial fans
- Bifurcator Fans
- Lab exhaust



## Kitchen ventilation

- Make-up air units
- Exhaust fans



## Energy recovery

- Outdoor units
- Indoor units

PennBarry is proud to be your preferred manufacturer of commercial and industrial fans and blowers. Learn how PennBarry can assist you in your next application by contacting your PennBarry Representative or visiting us on the web at [www.pennbarry.com](http://www.pennbarry.com)

PennBarry | [www.pennbarry.com](http://www.pennbarry.com) | [pennbarrysales@pennbarry.com](mailto:pennbarrysales@pennbarry.com) | Tel 972 212 4700 | Fax 972 212 4702

PennBarry reserves the right to make changes at any time, without notice, to models, construction, specifications, options and availability. This document illustrates the appearance of PennBarry products at the time of publication. View the latest updates on the PennBarry website.

© 2021 PennBarry. All rights reserved. SQX SEPTEMBER 2021.



PENNBARRY™